


Artisan
Professional Grills







Your dream outdoor kitchen may be more affordable than you think

Before Artisan, your choice for an outdoor kitchen came down to premium American-made brands at a high cost, or much less expensive (and much lower quality) imports.

At Artisan, we strive to offer affordable luxury with all the quality and features you expect in premium American-made appliances and accessories, at prices normally only imports can offer.

Our years of experience building equipment for some of the finest restaurants, and our state-of-the-art manufacturing facility, allow us to offer an unprecedented mix of quality and value.

How do Artisan Professional Grills compare with the others?

With materials and construction, functional design and meticulous craftsmanship surpassed by none, Artisan Professional Grill's are tough enough to withstand the rigors of living outdoors.



Artisan Exclusive Heat Delivery System

Heavy-duty 304 18-8 stainless burners create evenly distributed extreme high heat to the cooking surface.

- 20,000 BTU main burners
- 300 Series stainless steel "U" burners with dual rows of clean and efficient combusting double lance ports on three sides
- Best-in-class warranty



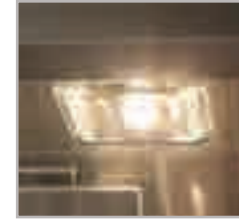
Made in the U.S.A.

Made from commercial-grade 304, 18-8 stainless steel. Durable heli-arc hand-welded seams with no mechanical fasteners.



Stainless Steel Cooking Grates

Heavy-duty stainless steel cooking grates with a special non-stick electro-polished finish are positioned over briquette and "U" burner sections.



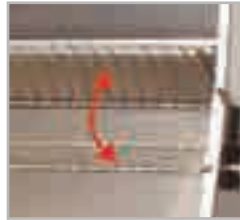
Halogen Work Light

Integrated high-intensity halogen work light on 32" and 36" models. Light lens is easily removable without the use of tools for cleaning and changing bulb. (excludes American Eagle Series).



New Fully-adjustable Brass Valves Allow for Precision Flame Control

Completely redesigned grill knobs with precision touch in mind.



Adjustable Food Warming and Grilling Rack

Two-position adjustable warming rack stores up and out of the way when rotissing. Ideal for above-grilling-surface holding and cooking.



Integrated Thermometer

Standard on every Artisan grill, this convenient thermometer is built into the hood for accurate oven roasting temperatures.



New Refractive Locked-in-Place Ceramic 5-way Heat Distributing Briquettes

A special pyramid shape with a flat top and heat-holding cavity on underside delivers intense even heat to the cooking surface. Radiant tray locks briquettes in place. Turn tray over and fire burners on high with lid closed to self-clean.



New Control Panel Lighting

Ambient blue LED front panel lighting illuminates knobs creating a rich beam of light exactly where you need it (excludes American Eagle Series).



Exclusive Heat Protected Wiring

Electrical wires are each encapsulated their full length with a 600° heat-resistance silicone sleeve, and all electric connectors are protected with a silicone boot of same heat resistance silicone.



Sear Zone™ Infrared Burner

Optional interchangeable infrared burner. 20,000 BTU infrared burner 100% combusting ceramic surface for intense even heat and authentic steakhouse results. Cooks 50% faster with virtually no flare-ups.



New Hood Lift Assist

Heavy-duty stainless steel spring assist makes for one finger open and close of the grill hood.



Exclusive Control Panel Air Cooling Curtain

A special air-cooling plenum blasts a curtain of cool air that flows up between the front control panel and firebox keeping front panel and bullnose safely cool to the touch. This also protects all the electronics.



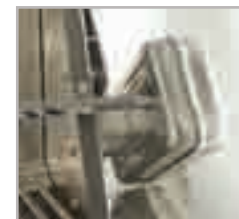
New Redesigned Switches

Stainless steel push-buttons for ignition and lighting are ergonomically integrated into the front control panel.



Flush Rear Infrared Rotisserie Burner

32" and 36" model grills come with a flush-mounted 1500° rear ceramic infrared rotisserie burner (excludes American Eagle Series).



Heavy-Duty 50-lb. Torque Rotisserie Motor

Turns foods smoothly and consistently, producing delicious rotissed foods (excludes American Eagle Series).

36" Artisan "Professional"

- Three 20,000 BTU main U-burners
- 15,000 BTU infrared rear rotisserie burner
- Total 75,000 BTUs
- 110V electronic ignition
- Bright halogen work light
- 2-position warming rack



ARTP-36



ARTP-36C



Cart Model Ships Fully Assembled

32" Artisan *"Professional"*

- Three 20,000 BTU main U-burners
- 15,000 BTU infrared rear rotisserie burner
- Total 75,000 BTUs
- 110V electronic ignition
- Bright halogen work light
- 2-position warming rack



ARTP-32



ARTP-32C



Cart Model Ships Fully Assembled

32" Artisan "American Eagle"

- Three 20,000 BTU main U-burners
- Total 60,000 BTUs
- 9V electronic ignition
- Warming rack
- **Optional: Rotis Accessory ART-ROT32**
(includes motor, spit, and forks only)



AAEP-32



AAEP-32C



Cart Model Ships Fully Assembled

26" Artisan "American Eagle"

- Two 20,000 BTU main U-burners
- Total 40,000 BTUs
- 9V electronic ignition
- Warming rack
- **Optional:** Rotis Accessory ART-ROT26
(includes motor, spit, and forks only)



AAEP-26



AAEP-26C



Cart Model Ships Fully Assembled

Accessories

Complete your dream outdoor kitchen



Access Doors and Drawers

Artisan access doors and drawers are made of 304 stainless steel exteriors for long life, easy maintenance and a perfect match to your grill. Doors feature magnetic closures and an optional interior shelf. Drawers feature full-length ball bearing slides for smooth operation.

Door/Drawer Combo Model #ARTP-DDC
Double Door Model #ARTP-DD
Double Drawer Model #ARTP-2DR
Single LEFT Door Model #ARTP-SDL
Single RIGHT Door Model #ARTP-SDR
Door Shelf for Cart Grill Model #ARTP-DS

Side Burner

Artisan's single side burner is the perfect complement to your grill. Simple drop-in installation for your island, or use with a freestanding grill with the optional side shelf accessory. Features a brass burner with 15,000 BTUs of power, AA battery powered ignition, and a hinged stainless steel cover.

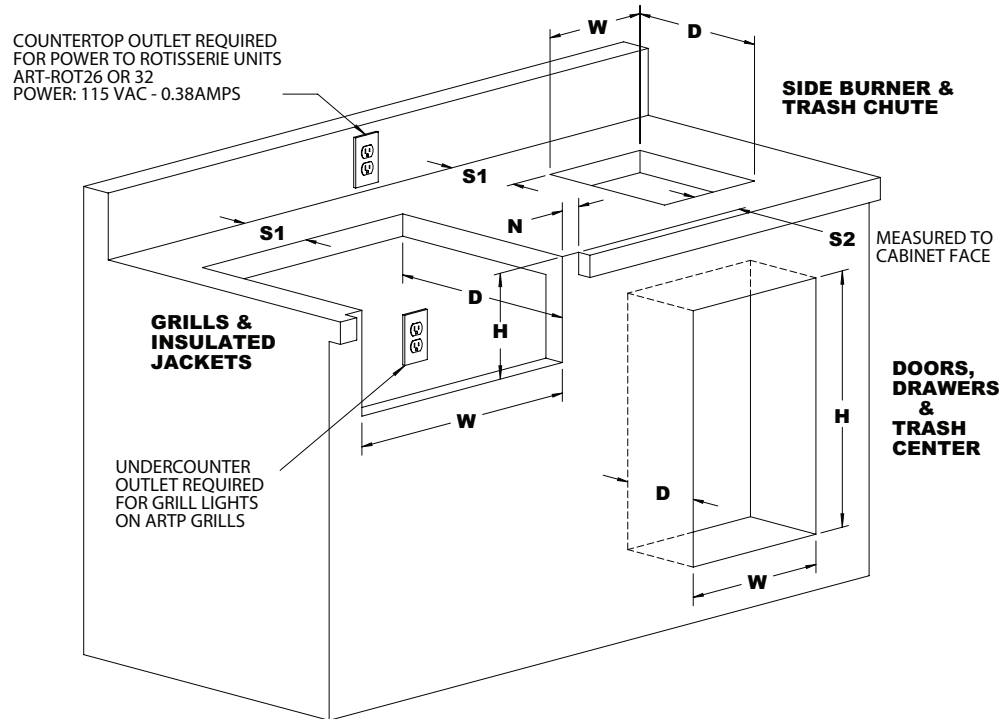
Side Burner Model #ART-SB1

Trash Center and Chute

The most convenient way to deal with waste in your outdoor kitchen. Trash Center features full-length ball bearing slides and holds a standard 10 gallon trash can (not included). Waste Chute mounts in countertop above for easy access to trash can below and features a sliding cutting board.

Prep/Waste Chute Model #ARTP-PWC
Trash Center Model #ARTP-TC

Specification and Cutouts



-Gas Requirements

Nat. - 1/2" NPT connection
5" WC pressure

L.P. - 3/8" ODF connection
10" W.C. pressure

Note: Standard configuration is for natural gas. For L.P. models, add "LP" to part # when ordering.

MODEL	CUTOUT DIMENSIONS			NOTCH N	SETBACKS		POWER ① AMPS	GAS LINE
	W	D	H		S1(MIN.)	S2		
AAEP-26	24-1/2"	19-3/4"	9-1/2"	7/8"	5-3/4"	~		③
ARTP-32 / AAEP-32	30-1/2"	19-3/4"	9-1/2"	7/8"	5-3/4"	~	0.71 ②	③
ARTP-36	34-1/2"	19-3/4"	9-1/2"	7/8"	5-3/4"	~	0.71 ②	③
ARTIJ-26	27-1/4"	23-5/8"	10-1/4"	7/8"	1-5/8"	~		④
ARTIJ-32	33-1/4"	23-5/8"	10-1/4"	7/8"	1-5/8"	~	④	④
ARTIJ-36	37-1/4"	23-5/8"	10-1/4"	7/8"	1-5/8"	~	④	④
ART-SB1	11"	15"	~	~	1-1/2"	~		⑤
ARTP-SDL /SDR	13-7/8"	~	18-1/2"	~	~	~		
ARTP-DD	27-1/4"	~	18-1/2"	~	~	~		
ARTP-DDC	29-3/8"	18-5/8"	18-1/2"	~	~	~		
ARTP-2DR	14-5/8"	18-5/8"	12-1/2"	~	~	~		
ARTP-TC	12-1/2"	18-1/2"	26-1/2"	~	~	~		
ARTP-PWC	6-1/4"	8-1/4"	~	~	~	4-5/8"		

NOTE ①: ALL POWER SUPPLIES SHOWN ARE 115 VAC - 1Ø - 60 Hz.

NOTE ②: POWER REQUIREMENTS FOR ARTP-32 AND ARTP-36 INCLUDE LIGHT AND ROTISSERIE POWER TOGETHER. AAEP BBQ'S USE 9 VDC IGNITION AND DO NOT HAVE LIGHTS.

NOTE ③: ALL GAS LINES REQUIREMENTS ARE AS FOLLOWS:
NG: 1/2" NPT WITH 5" W.C.
LP: 3/8" ODF WITH 10" W.C.

NOTE ④: INSULATED JACKETS ARTIJ-26 / 32 / 36 DO NOT REQUIRE POWER AND/OR GAS LINES BY THEMSELVES. ONLY THE GRILLS THEY ARE MEANT TO INSULATE REQUIRE THEM.

NOTE ⑤: ART-SB1 GAS LINE IS 3/8" OD CONNECTED TO THE EXISTING GRILL WITH SUPPLIED GAS FITTINGS.

Artisan
Professional Grills

Made in the U.S.A. by Superior Equipment Solutions
7039 East Slauson Ave
Commerce, CA 90040
Toll Free: 888.383.8800 323.722.7900 Fax: 323.726.4700
www.artisangrills.com