

# Perlick®

## Outdoor Price | List

PRICES EFFECTIVE

JANUARY 3, 2023

UPDATED FEBRUARY 5, 2024



### MODE ANAHEIM

4945 E. Hunter Avenue  
Anaheim, CA 92807  
P 714.523.1511  
F 714.522.0875

### MODE AURORA

16265 E. 33rd Drive Suite 20  
Aurora, CO 80011  
P 303.934.2317  
F 303.934.3956

Toll Free 1.800.836.8246

**MODE**  
superior products by design

[modedistributing.com](http://modedistributing.com)

# STOCK LIST

Model	Description	UMRP	Model	Description	UMRP
63797	Beer Unit Cleaning Kit	\$229	HP24RO-4-4L	Out Sig Refer Panel Glass Hinged Left	\$4,985
67282	SS Toe Kick for H50 and H80C	\$125	HP24RO-4-5	Out Sig 24 Refer Drawers Stainless Steel	\$5,740
630SS	Beer Faucet Forward Sealing Stainless	\$114	HP24RO-4-5DL	Out Sig 24 Refer Drawers Stainless Steel	\$5,775
63802A	Drain Pump for H50 and H80C	\$451	HP24RO-4-6	Out Sig 24 Refer Drawers Panel Ready	\$5,570
67141-1	Perlick Faucet Handle	\$110	HP24TO-4-1L-2	Out Sig 2 Beer Tap SS Solid Door Hinged Left	\$6,610
67439L	Door Hinge Kit Left	\$190	HP24TO-4-1LL-2	Out Sig 2 Beer Tap SS Solid Door Hinged Left	\$6,645
67439R	Door Hinge Kit Right	\$190	HP24TO-4-1RL-2	Out Sig 2 Beer Tap SS Solid Door Hinge Right	\$6,645
67440L	Perlick Lock Kit for Left Hinge Overlay	\$108	HP24TO-4-2R-2	Out Sig 2 Beer Tap Panel Solid Hinged Right	\$6,440
67440R	Perlick Lock Kit for Right Hinge Overlay	\$108	HP24WO-4-3RL	Out Sig Wine SS Glass Door Hinge Right	\$5,680
H50IMS-L	Clear Ice SS Door Hinged Left	\$4,805	HP24ZO-4-5	Out Sig DZ Freezer Refer Drawers SS	\$7,020
H50IMS-R	Clear Ice SS Door Hinged Right	\$4,805	HP24ZO-4-6	Out Sig DZ Freezer Refer Drawers Panel	\$6,860
H50IMW	Clear Ice Panel Ready Reversible	\$4,805	RS-24-24R	Shelf Refer for HP24, HC24, HA24	\$190
H80CIMS-L	Cubelet Ice SS Door Hinged Left	\$5,114	RS-24-24W	Shelf Wine for HP24, HP48, HC24, HA24	\$190
H80CIMS-R	Cubelet Ice SS Door Hinged Right	\$5,114	RS-25KG	2.5 gallon standard keg	\$406
H80CIMW	Cubelet Ice Panel Ready Reversible	\$5,114	RS-CDK	Iced Coffee Dispensing Kit	\$675
HC24RO-4-1L	Out C Series Refer SS Solid Hinged Left	\$3,865	RS-NCY	Nitro Cylinder Aluminum 244 cid	\$204
HC24RO-4-1LL	Out C Series Refer SS Solid Hinged Left	\$3,900			
HC24RO-4-1R	Out C Series Refer SS Solid Hinge Right	\$3,865			
HC24RO-4-1RL	Out C Series Refer SS Solid Hinge Right	\$3,900			
HC24RO-4-2L	Out C Series Refer Panel Solid Left	\$3,695			
HC24RO-4-2R	Out C Series Refer Panel Solid Right	\$3,695			
HC24RO-4-5	Out C Series Refer Drawers Stainless	\$4,640			
HC24RO-4-5DL	Out C Series Refer Drawers Stainless	\$4,675			
HC24RO-4-6DL	Out C Series Refer Drawers Panel	\$4,675			
HH24BO-4-1LL	Out Sottile BevCtr SS Solid Door Left	\$4,320			
HH24BO-4-1RL	Out Sottile BevCtr SS Solid Door Right	\$4,320			
HH24RO-4-1L	Out Sottile Refer SS Solid Door Left	\$4,220			
HP15BO-4-1RL	Out Sig BevCtr SS Solid Door Hinge Right	\$4,745			
HP15TO-4-1RL-1	Out Sig 1 Beer Tap SS Solid Door Hinged Right	\$5,815			
HP15WO-4-1RL	Out Sig Wine SS Solid Door Hinge Right	\$5,020			
HP24BO-4-1L	Out Sig BevCtr SS Solid Door Hinge Left	\$5,025			
HP24BO-4-3L	Out Sig BevCtr SS Glass Door Hinged Left	\$5,235			
HP24BO-4-3R	Out Sig BevCtr SS Glass Door Hinge Right	\$5,235			
HP24BO-4-3RL	Out Sig BevCtr SS Glass Door Hinge Right	\$5,270			
HP24FO-4-6	Out Sig Freezer Drawers Panel Ready	\$5,990			
HP24RO-4-1L	Out Sig Refer SS Solid Door Hinge Left	\$4,950			
HP24RO-4-1LL	Out Sig Refer SS Solid Door Hinge Left	\$4,985			
HP24RO-4-1R	Out Sig Refer SS Solid Door Hinge Right	\$4,950			
HP24RO-4-1RL	Out Sig Refer SS Solid Door Hinge Right	\$4,985			
HP24RO-4-2L	Out Sig Refer Panel Ready Hinged Left	\$4,785			
HP24RO-4-2R	Out Sig Refer Panel Ready Hinged Right	\$4,785			
HP24RO-4-3L	Out Sig Refer SS Glass Door Hinged Left	\$5,160			
HP24RO-4-3LL	Out Sig Refer SS Glass Door Hinged Left	\$5,195			
HP24RO-4-3R	Out Sig Refer SS Glass Door Hinged Right	\$5,160			
HP24RO-4-3RL	Out Sig Refer SS Glass Door Hinged Right	\$5,195			







## COLUMN MODEL NUMBER NOMENCLATURE

Below is a guide on how Perlick column model numbers are built. The following breakdown is for a 24" Column Dual Zone Wine Reserve with glass overlay door, hinge left (Model No. CR24D-1-4L).

*Please note that columns are only available in Panel Ready less handle (ready to accept custom panel with customer-supplied handle). If you desire a stainless steel door and Perlick handle, it must be ordered separately as an accessory item.*

<b>CR24D-1-4L</b>	<b>C = Column</b>			
<b>CR24D-1-4L</b>	<b>R = Refrigeration</b>			
<b>CR24D-1-4L</b>	<b>24 = 24" Wide Model</b>			
<b>CR24D-1-4L</b>	F = Freezer	R = Refrigerator	W = Wine Reserve, Single Zone	<b>D = Wine Reserve, Dual Zone</b>
<b>CR24D-1-4L</b>	<b>1 = Generation 1</b>			
<b>CR24D-1-4L</b>	2 = Panel Ready Solid Door*		<b>4 = Panel Ready Glass Door*</b>	
<b>CR24D-1-4L</b>	<b>L = Left Hinge</b>		R = Right Hinge	



## UNDERCOUNTER MODEL NUMBER NOMENCLATURE

Below is a guide on how Perlick undercounter model numbers are built. The following breakdown is for a 24" Signature Series Indoor Refrigerator with stainless steel glass door, hinged left (Model No. HP24RS-4-3L).

<b>HP24RS-4-3L</b>	<b>H = Home Products</b>			
<b>HP24RS-4-3L</b>	<b>P = Perlick Signature</b>	C = Commercial	H = Sottile	A = ADA-Compliant
<b>HP24RS-4-3L</b>	15 = 15" Wide Model	<b>24 = 24" Wide Model</b>		48 = 48" Wide Model
<b>HP24RS-4-3L</b>	F = Freezer	C = Dz Refrigerator/Wine Reserve		D = Dz Wine Reserve
	Z = Dz Freezer/Refrigerator	B = Beverage Center		T = Beer Dispenser
	<b>R = Refrigerator</b>	W = Wine Reserve		
<b>HP24RS-4-3L</b>	<b>S = Stand Alone (SS Exterior, Indoor)</b>	B = Built-In (Vinyl-Clad Exterior, Indoor)		O = Outdoor (SS Exterior)
<b>HP24RS-4-3L</b>	<b>4 = Generation 4</b>			
<b>HP24RS-4-3L</b>	1 = Stainless Steel Solid Door	<b>3 = Stainless Steel Glass Door</b>		5 = Stainless Steel Drawers
	2 = Panel Ready Solid Door*	4 = Panel Ready Glass Door*		6 = Panel Ready Drawers*
<b>HP24RS-4-3L</b>	<b>L = Left Hinge</b>		R = Right Hinge	

**\*This model comes ready to accept custom panel from cabinet maker.**

# TABLE OF CONTENTS

7	PERLICK SIGNATURE SERIES
21	PERLICK C-SERIES
25	PERLICK ICE MAKERS
29	PERLICK 70" MOBILE BAR
33	PERLICK 24" MOBILE TAP
39	PERLICK UNDERCOUNTER ACCESSORIES
45	PERLICK WARRANTY

**Perlick®**  
EXCLUSIVE RESIDENTIAL WARRANTY

**2 YEAR**  
PARTS & LABOR WARRANTY\*  
For All Residential Ice Makers  
(H50 & H80 Series)

**6 YEAR**  
PARTS & LABOR WARRANTY\*  
For All Gen 4 Hydro Carbon Undercounter  
Refrigeration (Excludes Residential Ice Makers)

\*See page 45 for additional information on  
Perlick Corporation Residential Refrigeration Products Limited Warranty





A photograph of a modern outdoor kitchen island at night. The island features a stainless steel countertop and two glass-fronted refrigerators. The left refrigerator is open, revealing shelves stocked with various bottles of beer and cans. The right refrigerator is also open, showing a neatly folded white towel on the top shelf and several containers on the bottom shelf. On the countertop, there are three glasses (two wine, one beer) and a small wooden cutting board. The island is situated on a stone patio in front of a house with large windows and a covered porch. A white bar stool is visible to the right of the island. The scene is illuminated by warm interior lights and cool exterior lighting, creating a sophisticated atmosphere.

# Perlick®

SIGNATURE SERIES

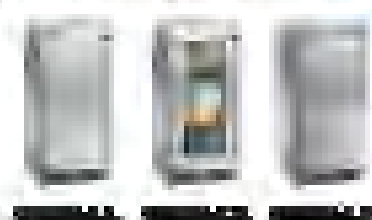
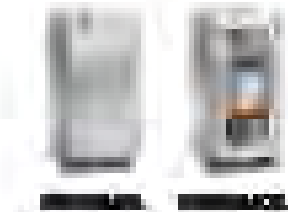
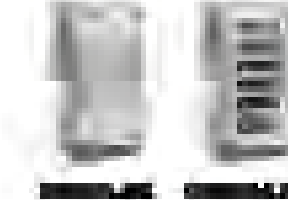






# 15" SIGNATURE SERIES MARINE GRADE HP15

1. The first step in the process of identifying a problem is to define the problem clearly. This involves identifying the symptoms of the problem and determining the scope of the problem.
2. The second step is to gather information about the problem. This involves collecting data and identifying the causes of the problem.
3. The third step is to analyze the information gathered. This involves identifying the key factors that are contributing to the problem and determining the relationships between these factors.
4. The fourth step is to develop a plan of action. This involves identifying the steps that need to be taken to solve the problem and determining the resources that will be needed.
5. The fifth step is to implement the plan. This involves putting the plan into action and monitoring the progress of the solution.
6. The sixth step is to evaluate the results. This involves assessing the effectiveness of the solution and determining whether the problem has been solved.
7. The seventh step is to document the process. This involves recording the steps that were taken and the results that were achieved.
8. The eighth step is to communicate the results. This involves sharing the results of the process with the relevant stakeholders.
9. The ninth step is to review the process. This involves reflecting on the process and identifying areas for improvement.
10. The tenth step is to implement the improvements. This involves putting the improvements into action and monitoring the progress of the solution.

[illegible][illegible][illegible][illegible]

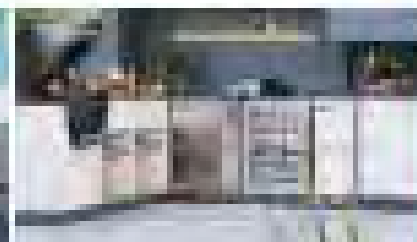
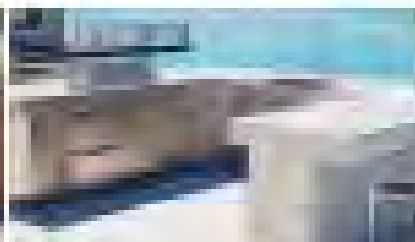


## PERLICK'S NEW MARINE AND COASTAL GRADE UNDERCOUNTER REFRIGERATION WITH PERLICK ARMOR™

UNDERCOUNTER REFRIGERATION DESIGNED TO TACKLE THE ELEMENTS

Undercounter, 18 in. Island, Perllick's new suggested series of our built-in commercial under refrigeration has designed to tackle the elements. Whether you are always in coastal conditions, salt, core saltwaterproof, the built-in effects of high salt environments, corrosion, heat, and potentially weather-related appliances. Perllick's Marine and Coastal Grade Undercounter Refrigeration featuring Perllick Armor™ is built to endure the harshest conditions while maintaining the excellent functionality and efficiency quality that you've come to expect from Perllick.

- Contains a mix of 304 and 316 stainless steel for durability and easy cleaning after consumption, while corrosion-resistant marine-grade materials
- A protective coating is applied to the refrigeration for extra durability
- This series is equipped with suggested 18-in. stainless steel and zinc-plated stainless steel and wall-mounts attached across
- Our Perllick Armor™ suggests portable maintenance on 1-800 and 800 lines and the 100 series





## 24" SIGNATURE SERIES OUTDOOR HP24

The above information is being furnished to you for your information only. It is not intended to be used for any other purpose. The information is being furnished to you for your information only. It is not intended to be used for any other purpose. The information is being furnished to you for your information only. It is not intended to be used for any other purpose.

- [illegible]



\_\_\_\_\_

\_\_\_\_\_



\_\_\_\_\_



\_\_\_\_\_

100

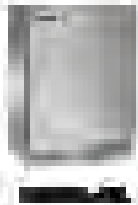
\_\_\_\_\_

Item	Description	Amount
1000000-001	Power, Electric, 1000000-001	\$1,000
1000000-002	Power, Electric, 1000000-002	\$1,000
1000000-003	Power, Electric, 1000000-003	\$1,000
1000000-004	Power, Electric, 1000000-004	\$1,000
1000000-005	Power, Electric, 1000000-005	\$1,000
1000000-006	Power, Electric, 1000000-006	\$1,000
1000000-007	Power, Electric, 1000000-007	\$1,000
1000000-008	Power, Electric, 1000000-008	\$1,000
1000000-009	Power, Electric, 1000000-009	\$1,000
1000000-010	Power, Electric, 1000000-010	\$1,000

<b>FOR INFORMATION PURPOSES ONLY - PRE-APPROVAL REQUIRED</b> <b>REVENUE - PLANNING</b>			<b>DATE</b>
<b>2024-25-26</b>	<b>Multi-Year Financial Performance Summary, Budgets, and</b>	<b>Revenue, and</b>	<b>2024</b>
<b>2024-25-26</b>	<b>Multi-Year Financial Performance Summary, Budgets, and</b>	<b>Revenue, and</b>	<b>2024</b>

[illegible]

## 24" SIGNATURE SERIES OUTDOOR HP24



### 24" SIGNATURE SERIES OUTDOOR REFRIGERATOR - COUNTER TOP

Model	Description	MSRP
HP24CC-A-CL	Outdoor Refrigerator Stainless Steel/Black Door Left Door Hinged Left	\$1,299.00
HP24CC-A-R	Outdoor Refrigerator Stainless Steel/Black Door Right Door Hinged Right	\$1,299.00
HP24CC-A-CL	Outdoor Refrigerator Stainless Steel/Black Door Left Door Hinged Left	\$1,299.00
HP24CC-A-R	Outdoor Refrigerator Stainless Steel/Black Door Right Door Hinged Right	\$1,299.00
HP24CC-A-CL	Outdoor Refrigerator Stainless Steel/Black Door Left Door Hinged Left	\$1,299.00
HP24CC-A-R	Outdoor Refrigerator Stainless Steel/Black Door Right Door Hinged Right	\$1,299.00
HP24CC-A-CL	Outdoor Refrigerator Stainless Steel/Black Door Left Door Hinged Left	\$1,299.00
HP24CC-A-R	Outdoor Refrigerator Stainless Steel/Black Door Right Door Hinged Right	\$1,299.00



### 24" SIGNATURE SERIES OUTDOOR REFRIGERATOR - COUNTER TOP

Model	Description	MSRP
HP24CC-A-CL	Outdoor Refrigerator Stainless Steel/Black Door Left Door Hinged Left	\$1,299.00
HP24CC-A-R	Outdoor Refrigerator Stainless Steel/Black Door Right Door Hinged Right	\$1,299.00
HP24CC-A-CL	Outdoor Refrigerator Stainless Steel/Black Door Left Door Hinged Left	\$1,299.00
HP24CC-A-R	Outdoor Refrigerator Stainless Steel/Black Door Right Door Hinged Right	\$1,299.00
HP24CC-A-CL	Outdoor Refrigerator Stainless Steel/Black Door Left Door Hinged Left	\$1,299.00
HP24CC-A-R	Outdoor Refrigerator Stainless Steel/Black Door Right Door Hinged Right	\$1,299.00
HP24CC-A-CL	Outdoor Refrigerator Stainless Steel/Black Door Left Door Hinged Left	\$1,299.00
HP24CC-A-R	Outdoor Refrigerator Stainless Steel/Black Door Right Door Hinged Right	\$1,299.00



### 24" SIGNATURE SERIES OUTDOOR REFRIGERATOR - COUNTER TOP

Model	Description	MSRP
HP24CC-A-CL	Outdoor Refrigerator Stainless Steel/Black Door Left Door Hinged Left	\$1,299.00
HP24CC-A-R	Outdoor Refrigerator Stainless Steel/Black Door Right Door Hinged Right	\$1,299.00
HP24CC-A-CL	Outdoor Refrigerator Stainless Steel/Black Door Left Door Hinged Left	\$1,299.00
HP24CC-A-R	Outdoor Refrigerator Stainless Steel/Black Door Right Door Hinged Right	\$1,299.00
HP24CC-A-CL	Outdoor Refrigerator Stainless Steel/Black Door Left Door Hinged Left	\$1,299.00
HP24CC-A-R	Outdoor Refrigerator Stainless Steel/Black Door Right Door Hinged Right	\$1,299.00
HP24CC-A-CL	Outdoor Refrigerator Stainless Steel/Black Door Left Door Hinged Left	\$1,299.00
HP24CC-A-R	Outdoor Refrigerator Stainless Steel/Black Door Right Door Hinged Right	\$1,299.00



- ENERGY STAR Qualified Model

E - Industry Exclusive Model

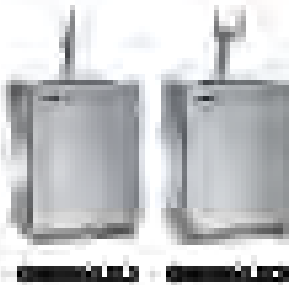
Prices & availability subject to change without notice

orders@modedistributing.com

## 24" SIGNATURE SERIES OUTDOOR HP24



24" SIGNATURE SERIES OUTDOOR REFRIGERATORS - CLOSING DOOR	MODEL
HP24C0-1-E-L	Black Glass, Ring Handle, Stainless Steel, Frost-Free, 2-Door, Right Hand, Right Lock
HP24C0-1-E-R	Black Glass, Ring Handle, Stainless Steel, Frost-Free, 2-Door, Left Hand, Left Lock
HP24C0-2-E-L	Double Glass, Ring Handle, Stainless Steel, Frost-Free, 2-Door, Right Hand, Right Lock
HP24C0-2-E-R	Double Glass, Ring Handle, Stainless Steel, Frost-Free, 2-Door, Left Hand, Left Lock
HP24C0-3-E-L	Double Glass, Ring Handle, Stainless Steel, Frost-Free, 3-Door, Right Hand, Right Lock
HP24C0-3-E-R	Double Glass, Ring Handle, Stainless Steel, Frost-Free, 3-Door, Left Hand, Left Lock
HP24C0-4-E-L	Double Glass, Ring Handle, Stainless Steel, Frost-Free, 4-Door, Right Hand, Right Lock
HP24C0-4-E-R	Double Glass, Ring Handle, Stainless Steel, Frost-Free, 4-Door, Left Hand, Left Lock



24" SIGNATURE SERIES OUTDOOR REFRIGERATORS - OPENING DOOR	MODEL
HP24C0-1-E-L	Black Glass, Ring Handle, Stainless Steel, Frost-Free, 2-Door, Right Hand, Right Lock
HP24C0-1-E-R	Black Glass, Ring Handle, Stainless Steel, Frost-Free, 2-Door, Left Hand, Left Lock
HP24C0-2-E-L	Double Glass, Ring Handle, Stainless Steel, Frost-Free, 2-Door, Right Hand, Right Lock
HP24C0-2-E-R	Double Glass, Ring Handle, Stainless Steel, Frost-Free, 2-Door, Left Hand, Left Lock
HP24C0-3-E-L	Double Glass, Ring Handle, Stainless Steel, Frost-Free, 3-Door, Right Hand, Right Lock
HP24C0-3-E-R	Double Glass, Ring Handle, Stainless Steel, Frost-Free, 3-Door, Left Hand, Left Lock
HP24C0-4-E-L	Double Glass, Ring Handle, Stainless Steel, Frost-Free, 4-Door, Right Hand, Right Lock
HP24C0-4-E-R	Double Glass, Ring Handle, Stainless Steel, Frost-Free, 4-Door, Left Hand, Left Lock

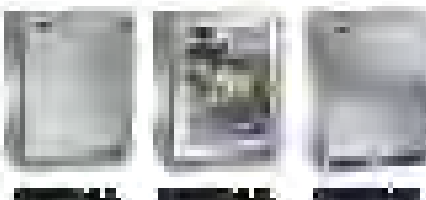


[illegible]

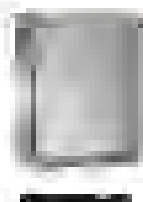
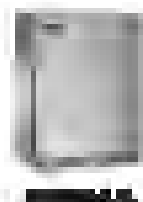
- [illegible]



2017		2016	2015	2014	2013	2012	2011	2010	2009	2008	2007	2006	2005	2004	2003	2002	2001	2000	1999	1998	1997	1996	1995	1994	1993	1992	1991	1990	1989	1988	1987	1986	1985	1984	1983	1982	1981	1980	1979	1978	1977	1976	1975	1974	1973	1972	1971	1970	1969	1968	1967	1966	1965	1964	1963	1962	1961	1960	1959	1958	1957	1956	1955	1954	1953	1952	1951	1950	1949	1948	1947	1946	1945	1944	1943	1942	1941	1940	1939	1938	1937	1936	1935	1934	1933	1932	1931	1930	1929	1928	1927	1926	1925	1924	1923	1922	1921	1920	1919	1918	1917	1916	1915	1914	1913	1912	1911	1910	1909	1908	1907	1906	1905	1904	1903	1902	1901	1900	1899	1898	1897	1896	1895	1894	1893	1892	1891	1890	1889	1888	1887	1886	1885	1884	1883	1882	1881	1880	1879	1878	1877	1876	1875	1874	1873	1872	1871	1870	1869	1868	1867	1866	1865	1864	1863	1862	1861	1860	1859	1858	1857	1856	1855	1854	1853	1852	1851	1850	1849	1848	1847	1846	1845	1844	1843	1842	1841	1840	1839	1838	1837	1836	1835	1834	1833	1832	1831	1830	1829	1828	1827	1826	1825	1824	1823	1822	1821	1820	1819	1818	1817	1816	1815	1814	1813	1812	1811	1810	1809	1808	1807	1806	1805	1804	1803	1802	1801	1800	1799	1798	1797	1796	1795	1794	1793	1792	1791	1790	1789	1788	1787	1786	1785	1784	1783	1782	1781	1780	1779	1778	1777	1776	1775	1774	1773	1772	1771	1770	1769	1768	1767	1766	1765	1764	1763	1762	1761	1760	1759	1758	1757	1756	1755	1754	1753	1752	1751	1750	1749	1748	1747	1746	1745	1744	1743	1742	1741	1740	1739	1738	1737	1736	1735	1734	1733	1732	1731	1730	1729	1728	1727	1726	1725	1724	1723	1722	1721	1720	1719	1718	1717	1716	1715	1714	1713	1712	1711	1710	1709	1708	1707	1706	1705	1704	1703	1702	1701	1700	1699	1698	1697	1696	1695	1694	1693	1692	1691	1690	1689	1688	1687	1686	1685	1684	1683	1682	1681	1680	1679	1678	1677	1676	1675	1674	1673	1672	1671	1670	1669	1668	1667	1666	1665	1664	1663	1662	1661	1660	1659	1658	1657	1656	1655	1654	1653	1652	1651	1650	1649	1648	1647	1646	1645	1644	1643	1642	1641	1640	1639	1638	1637	1636	1635	1634	1633	1632	1631	1630	1629	1628	1627	1626	1625	1624	1623	1622	1621	1620	1619	1618	1617	1616	1615	1614	1613	1612	1611	1610	1609	1608	1607	1606	1605	1604	1603	1602	1601	1600	1599	1598	1597	1596	1595	1594	1593	1592	1591	1590	1589	1588	1587	1586	1585	1584	1583	1582	1581	1580	1579	1578	1577	1576	1575	1574	1573	1572	1571	1570	1569	1568	1567	1566	1565	1564	1563	1562	1561	1560	1559	1558	1557	1556	1555	1554	1553	1552	1551	1550	1549	1548	1547	1546	1545	1544	1543	1542	1541	1540	1539	1538	1537	1536	1535	1534	1533	1532	1531	1530	1529	1528	1527	1526	1525	1524	1523	1522	1521	1520	1519	1518	1517	1516	1515	1514	1513	1512	1511	1510	1509	1508	1507	1506	1505	1504	1503	1502	1501	1500	1499	1498	1497	1496	1495	1494	1493	1492	1491	1490	1489	1488	1487	1486	1485	1484	1483	1482	1481	1480	1479	1478	1477	1476	1475	1474	1473	1472	1471	1470	1469	1468	1467	1466	1465	1464	1463	1462	1461	1460	1459	1458	1457	1456	1455	1454	1453	1452	1451	1450	1449	1448	1447	1446	1445	1444	1443	1442	1441	1440	1439	1438	1437	1436	1435	1434	1433	1432	1431	1430	1429	1428	1427	1426	1425	1424	1423	1422	1421	1420	1419	1418	1417	1416	1415	1414	1413	1412	1411	1410	1409	1408	1407	1406	1405	1404	1403	1402	1401	1400	1399	1398	1397	1396	1395	1394	1393	1392	1391	1390	1389	1388	1387	1386	1385	1384	1383	1382	1381	1380	1379	1378	1377	1376	1375	1374	1373	1372	1371	1370	1369	1368	1367	1366	1365	1364	1363	1362	1361	1360	1359	1358	1357	1356	1355	1354	1353	1352	1351	1350	1349	1348	1347	1346	1345	1344	1343	1342	1341	1340	1339	1338	1337	1336	1335	1334	1333	1332	1331	1330	1329	1328	1327	1326	1325	1324	1323	1322	1321	1320	1319	1318	1317	1316	1315	1314	1313	1312	1311	1310	1309	1308	1307	1306	1305	1304	1303	1302	1301	1300	1299	1298	1297	1296	1295	1294	1293	1292	1291	1290	1289	1288	1287	1286	1285	1284	1283	1282	1281	1280	1279	1278	1277	1276	1275	1274	1273	1272	1271	1270	1269	1268	1267	1266	1265	1264	1263	1262	1261	1260	1259	1258	1257	1256	1255	1254	1253	1252	1251	1250	1249	1248	1247	1246	1245	1244	1243	1242	1241	1240	1239	1238	1237	1236	1235	1234	1233	1232	1231	1230	1229	1228	1227	1226	1225	1224	1223	1222	1221	1220	1219	1218	1217	1216	1215	1214	1213	1212	1211	1210	1209	1208	1207	1206	1205	1204	1203	1202	1201	1200	1199	1198	1197	1196	1195	1194	1193	1192	1191	1190	1189	1188	1187	1186	1185	1184	1183	1182	1181	1180	1179	1178	1177	1176	1175	1174	1173	1172	1171	1170	1169	1168	1167	1166	1165	1164	1163	1162	1161	1160	1159	1158	1157	1156	1155	1154	1153	1152	1151	1150	1149	1148	1147	1146	1145	1144	1143	1142	1141	1140	1139	1138	1137	1136	1135	1134	1133	1132	1131	1130	1129	1128	1127	1126	1125	1124	1123	1122	1121	1120	1119	1118	1117	1116	1115	1114	1113	1112	1111	1110	1109	1108	1107	1106	1105	1104	1103	1102	1101	1100	1099	1098	1097	1096	1095	1094	1093	1092	1091	1090	1089	1088	1087	1086	1085	1084	1083	1082	1081	1080	1079	1078	1077	1076	1075	1074	1073	1072	1071	1070	1069	1068	1067	1066	1065	1064	1063	1062	1061	1060	1059	1058	1057	1056	1055	1054	1053	1052	1051	1050	1049	1048	1047	1046	1045	1044	1043	1042	1041	1040	1039	1038	1037	1036	1035	1034	1033	1032	1031	1030	1029	1028	1027	1026	1025	1024	1023	1022	1021	1020	1019	1018	1017	1016	1015	1014	1013	1012	1011	1010	1009	1008	1007	1006	1005	1004	1003	1002	1001	1000	999	998	997	996	995	994	993	992	991	990	989	988	987	986	985	984	983	982	981	980	979	978	977	976	975	974	973	972	971	970	969	968	967	966	965	964	963	962	961	960	959	958	957	956	955	954	953	952	951	950	949	948	947	946	945	944	943	942	941	940	939	938	937	936	935	934	933	932	931	930	929	928	927	926	925	924	923	922	921	920	919	918	917	916	915	914	913	912	911	910	909	908	907	906	905	904	903	902	901	900	899	898	897	896	895	894	893	892	891	890	889	888	887	886	885	884	883	882	881	880	879	878	877	876	875	874	873	872	871	870	869	868	867	866	865	864	863	862	861	860	859	858	857	856	855	854	853	852	851	850	849	848	847	846	845	844	843	842	841	840	839	838	837	836	835	834	833	832	831	830	829	828	827	826	825	824	823	822	821	820	819	818	817	816	815	814	813	812	811	810	809	808	807	806	805	804	803	802	801	800	799	798	797	796	795	794	793	792	791	790	789	788	787	786	785	784	783	782	781	780	779	778	777	776	775	774	773	772	771	770	769	768	767	766	765	764	763	762	761	760	759	758	757	756	755	754	753	752	751	750	749	748	747	746	745	744	743	742	741	740	739	738	737	736	735	734	733	732	731	730	729	728	727	726	725	724	723	722	721	720	719	718	717	716	715	714	713	712	711	710	709	708	707	706	705	704	703	702	701	700	699	698	697	696	695	694	693	692	691	690	689	688	687	686	685	684	683	682	681	680	679	678	677	676	675	674	673	672	671	670	669	668	667	666	665	664	663	662	661	660	659	658	657	656	655	654	653	652	651	650	649	648	647	646	645	644	643	642	641	640	639	638	637	636	635	634	633	632	631	630	629	628	627	626	625	624	623	622	621	620	619	618	617	616	615	614	613	612	611	610	609	608	607	606	605	604	603	602	601	600	599	598
------	--	------	------	------	------	------	------	------	------	------	------	------	------	------	------	------	------	------	------	------	------	------	------	------	------	------	------	------	------	------	------	------	------	------	------	------	------	------	------	------	------	------	------	------	------	------	------	------	------	------	------	------	------	------	------	------	------	------	------	------	------	------	------	------	------	------	------	------	------	------	------	------	------	------	------	------	------	------	------	------	------	------	------	------	------	------	------	------	------	------	------	------	------	------	------	------	------	------	------	------	------	------	------	------	------	------	------	------	------	------	------	------	------	------	------	------	------	------	------	------	------	------	------	------	------	------	------	------	------	------	------	------	------	------	------	------	------	------	------	------	------	------	------	------	------	------	------	------	------	------	------	------	------	------	------	------	------	------	------	------	------	------	------	------	------	------	------	------	------	------	------	------	------	------	------	------	------	------	------	------	------	------	------	------	------	------	------	------	------	------	------	------	------	------	------	------	------	------	------	------	------	------	------	------	------	------	------	------	------	------	------	------	------	------	------	------	------	------	------	------	------	------	------	------	------	------	------	------	------	------	------	------	------	------	------	------	------	------	------	------	------	------	------	------	------	------	------	------	------	------	------	------	------	------	------	------	------	------	------	------	------	------	------	------	------	------	------	------	------	------	------	------	------	------	------	------	------	------	------	------	------	------	------	------	------	------	------	------	------	------	------	------	------	------	------	------	------	------	------	------	------	------	------	------	------	------	------	------	------	------	------	------	------	------	------	------	------	------	------	------	------	------	------	------	------	------	------	------	------	------	------	------	------	------	------	------	------	------	------	------	------	------	------	------	------	------	------	------	------	------	------	------	------	------	------	------	------	------	------	------	------	------	------	------	------	------	------	------	------	------	------	------	------	------	------	------	------	------	------	------	------	------	------	------	------	------	------	------	------	------	------	------	------	------	------	------	------	------	------	------	------	------	------	------	------	------	------	------	------	------	------	------	------	------	------	------	------	------	------	------	------	------	------	------	------	------	------	------	------	------	------	------	------	------	------	------	------	------	------	------	------	------	------	------	------	------	------	------	------	------	------	------	------	------	------	------	------	------	------	------	------	------	------	------	------	------	------	------	------	------	------	------	------	------	------	------	------	------	------	------	------	------	------	------	------	------	------	------	------	------	------	------	------	------	------	------	------	------	------	------	------	------	------	------	------	------	------	------	------	------	------	------	------	------	------	------	------	------	------	------	------	------	------	------	------	------	------	------	------	------	------	------	------	------	------	------	------	------	------	------	------	------	------	------	------	------	------	------	------	------	------	------	------	------	------	------	------	------	------	------	------	------	------	------	------	------	------	------	------	------	------	------	------	------	------	------	------	------	------	------	------	------	------	------	------	------	------	------	------	------	------	------	------	------	------	------	------	------	------	------	------	------	------	------	------	------	------	------	------	------	------	------	------	------	------	------	------	------	------	------	------	------	------	------	------	------	------	------	------	------	------	------	------	------	------	------	------	------	------	------	------	------	------	------	------	------	------	------	------	------	------	------	------	------	------	------	------	------	------	------	------	------	------	------	------	------	------	------	------	------	------	------	------	------	------	------	------	------	------	------	------	------	------	------	------	------	------	------	------	------	------	------	------	------	------	------	------	------	------	------	------	------	------	------	------	------	------	------	------	------	------	------	------	------	------	------	------	------	------	------	------	------	------	------	------	------	------	------	------	------	------	------	------	------	------	------	------	------	------	------	------	------	------	------	------	------	------	------	------	------	------	------	------	------	------	------	------	------	------	------	------	------	------	------	------	------	------	------	------	------	------	------	------	------	------	------	------	------	------	------	------	------	------	------	------	------	------	------	------	------	------	------	------	------	------	------	------	------	------	------	------	------	------	------	------	------	------	------	------	------	------	------	------	------	------	------	------	------	------	------	------	------	------	------	------	------	------	------	------	------	------	------	------	------	------	------	------	------	------	------	------	------	------	------	------	------	------	------	------	------	------	------	------	------	------	------	------	------	------	------	------	------	------	------	------	------	------	------	------	------	------	------	------	------	------	------	------	------	------	------	------	------	------	------	------	------	------	------	------	------	------	------	------	------	------	------	------	------	------	------	------	------	------	------	------	------	------	------	------	------	------	------	------	------	------	------	------	------	------	------	------	------	------	------	------	------	------	------	------	------	------	------	------	------	------	------	------	------	------	------	------	------	------	------	------	------	------	------	------	------	------	------	------	------	------	------	------	------	------	------	------	------	------	------	------	------	------	------	------	------	------	------	------	------	------	------	------	------	------	------	------	------	------	------	------	------	------	------	------	------	------	------	------	------	------	------	------	------	------	------	------	------	------	------	------	------	------	------	------	------	------	------	------	------	------	------	------	------	-----	-----	-----	-----	-----	-----	-----	-----	-----	-----	-----	-----	-----	-----	-----	-----	-----	-----	-----	-----	-----	-----	-----	-----	-----	-----	-----	-----	-----	-----	-----	-----	-----	-----	-----	-----	-----	-----	-----	-----	-----	-----	-----	-----	-----	-----	-----	-----	-----	-----	-----	-----	-----	-----	-----	-----	-----	-----	-----	-----	-----	-----	-----	-----	-----	-----	-----	-----	-----	-----	-----	-----	-----	-----	-----	-----	-----	-----	-----	-----	-----	-----	-----	-----	-----	-----	-----	-----	-----	-----	-----	-----	-----	-----	-----	-----	-----	-----	-----	-----	-----	-----	-----	-----	-----	-----	-----	-----	-----	-----	-----	-----	-----	-----	-----	-----	-----	-----	-----	-----	-----	-----	-----	-----	-----	-----	-----	-----	-----	-----	-----	-----	-----	-----	-----	-----	-----	-----	-----	-----	-----	-----	-----	-----	-----	-----	-----	-----	-----	-----	-----	-----	-----	-----	-----	-----	-----	-----	-----	-----	-----	-----	-----	-----	-----	-----	-----	-----	-----	-----	-----	-----	-----	-----	-----	-----	-----	-----	-----	-----	-----	-----	-----	-----	-----	-----	-----	-----	-----	-----	-----	-----	-----	-----	-----	-----	-----	-----	-----	-----	-----	-----	-----	-----	-----	-----	-----	-----	-----	-----	-----	-----	-----	-----	-----	-----	-----	-----	-----	-----	-----	-----	-----	-----	-----	-----	-----	-----	-----	-----	-----	-----	-----	-----	-----	-----	-----	-----	-----	-----	-----	-----	-----	-----	-----	-----	-----	-----	-----	-----	-----	-----	-----	-----	-----	-----	-----	-----	-----	-----	-----	-----	-----	-----	-----	-----	-----	-----	-----	-----	-----	-----	-----	-----	-----	-----	-----	-----	-----	-----	-----	-----	-----	-----	-----	-----	-----	-----	-----	-----	-----	-----	-----	-----	-----	-----	-----	-----	-----	-----	-----	-----	-----	-----	-----	-----	-----	-----	-----	-----	-----	-----	-----	-----	-----	-----	-----	-----	-----	-----	-----	-----	-----	-----	-----	-----	-----	-----	-----	-----	-----	-----	-----	-----	-----	-----	-----	-----	-----	-----	-----	-----	-----	-----	-----	-----	-----	-----	-----	-----	-----	-----	-----	-----	-----	-----	-----	-----	-----	-----	-----	-----	-----	-----	-----	-----	-----	-----	-----	-----	-----	-----	-----	-----	-----	-----	-----	-----	-----	-----	-----	-----	-----	-----	-----	-----	-----	-----	-----	-----	-----	-----	-----	-----	-----	-----	-----	-----	-----	-----	-----	-----

[illegible]

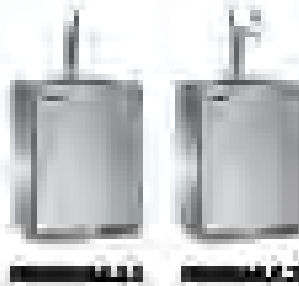
## 24" SIGNATURE SERIES MARINE GRADE HP24

[illegible]

## 24" SIGNATURE SERIES MARINE GRADE HP24



Model	Configuration	Price
HP24M-1-01	24" Marine Grade Refrigerator, 10.5 Cu. Ft., 120V, 60Hz, 1/2 HP, 1/2" Thick, 1/2" Deep, 1/2" Wide, 1/2" High, 1/2" Thick, 1/2" Deep, 1/2" Wide, 1/2" High	\$1,499.00
HP24M-2-01	24" Marine Grade Refrigerator, 10.5 Cu. Ft., 120V, 60Hz, 1/2 HP, 1/2" Thick, 1/2" Deep, 1/2" Wide, 1/2" High, 1/2" Thick, 1/2" Deep, 1/2" Wide, 1/2" High	\$1,499.00
HP24M-3-01	24" Marine Grade Refrigerator, 10.5 Cu. Ft., 120V, 60Hz, 1/2 HP, 1/2" Thick, 1/2" Deep, 1/2" Wide, 1/2" High, 1/2" Thick, 1/2" Deep, 1/2" Wide, 1/2" High	\$1,499.00
HP24M-4-01	24" Marine Grade Refrigerator, 10.5 Cu. Ft., 120V, 60Hz, 1/2 HP, 1/2" Thick, 1/2" Deep, 1/2" Wide, 1/2" High, 1/2" Thick, 1/2" Deep, 1/2" Wide, 1/2" High	\$1,499.00
HP24M-5-01	24" Marine Grade Refrigerator, 10.5 Cu. Ft., 120V, 60Hz, 1/2 HP, 1/2" Thick, 1/2" Deep, 1/2" Wide, 1/2" High, 1/2" Thick, 1/2" Deep, 1/2" Wide, 1/2" High	\$1,499.00
HP24M-6-01	24" Marine Grade Refrigerator, 10.5 Cu. Ft., 120V, 60Hz, 1/2 HP, 1/2" Thick, 1/2" Deep, 1/2" Wide, 1/2" High, 1/2" Thick, 1/2" Deep, 1/2" Wide, 1/2" High	\$1,499.00
HP24M-7-01	24" Marine Grade Refrigerator, 10.5 Cu. Ft., 120V, 60Hz, 1/2 HP, 1/2" Thick, 1/2" Deep, 1/2" Wide, 1/2" High, 1/2" Thick, 1/2" Deep, 1/2" Wide, 1/2" High	\$1,499.00
HP24M-8-01	24" Marine Grade Refrigerator, 10.5 Cu. Ft., 120V, 60Hz, 1/2 HP, 1/2" Thick, 1/2" Deep, 1/2" Wide, 1/2" High, 1/2" Thick, 1/2" Deep, 1/2" Wide, 1/2" High	\$1,499.00



Model	Configuration	Price
HP24M-9-01	24" Marine Grade Refrigerator, 10.5 Cu. Ft., 120V, 60Hz, 1/2 HP, 1/2" Thick, 1/2" Deep, 1/2" Wide, 1/2" High, 1/2" Thick, 1/2" Deep, 1/2" Wide, 1/2" High	\$1,499.00
HP24M-10-01	24" Marine Grade Refrigerator, 10.5 Cu. Ft., 120V, 60Hz, 1/2 HP, 1/2" Thick, 1/2" Deep, 1/2" Wide, 1/2" High, 1/2" Thick, 1/2" Deep, 1/2" Wide, 1/2" High	\$1,499.00
HP24M-11-01	24" Marine Grade Refrigerator, 10.5 Cu. Ft., 120V, 60Hz, 1/2 HP, 1/2" Thick, 1/2" Deep, 1/2" Wide, 1/2" High, 1/2" Thick, 1/2" Deep, 1/2" Wide, 1/2" High	\$1,499.00
HP24M-12-01	24" Marine Grade Refrigerator, 10.5 Cu. Ft., 120V, 60Hz, 1/2 HP, 1/2" Thick, 1/2" Deep, 1/2" Wide, 1/2" High, 1/2" Thick, 1/2" Deep, 1/2" Wide, 1/2" High	\$1,499.00
HP24M-13-01	24" Marine Grade Refrigerator, 10.5 Cu. Ft., 120V, 60Hz, 1/2 HP, 1/2" Thick, 1/2" Deep, 1/2" Wide, 1/2" High, 1/2" Thick, 1/2" Deep, 1/2" Wide, 1/2" High	\$1,499.00
HP24M-14-01	24" Marine Grade Refrigerator, 10.5 Cu. Ft., 120V, 60Hz, 1/2 HP, 1/2" Thick, 1/2" Deep, 1/2" Wide, 1/2" High, 1/2" Thick, 1/2" Deep, 1/2" Wide, 1/2" High	\$1,499.00
HP24M-15-01	24" Marine Grade Refrigerator, 10.5 Cu. Ft., 120V, 60Hz, 1/2 HP, 1/2" Thick, 1/2" Deep, 1/2" Wide, 1/2" High, 1/2" Thick, 1/2" Deep, 1/2" Wide, 1/2" High	\$1,499.00
HP24M-16-01	24" Marine Grade Refrigerator, 10.5 Cu. Ft., 120V, 60Hz, 1/2 HP, 1/2" Thick, 1/2" Deep, 1/2" Wide, 1/2" High, 1/2" Thick, 1/2" Deep, 1/2" Wide, 1/2" High	\$1,499.00



- ENERGY STAR Qualified Model

E - Industry Exclusive Model

Prices & availability subject to change without notice

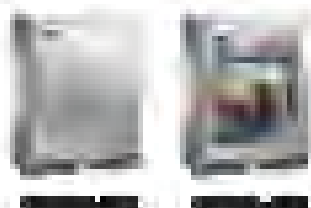
[orders@modedistributing.com](mailto:orders@modedistributing.com)



## 18" DEPTH SIGNATURE SERIES OUTDOOR HH24

~~CONFIDENTIAL - SECURITY INFORMATION~~

- [illegible]



UNIVERSITY OF MICHIGAN LIBRARY - ANN ARBOR			
100-100-1-1	Navigation Tables, First Series, 1800-1801	1	14,000
100-100-1-2	Navigation Tables, Second Series, 1802-1803	1	14,000
100-100-1-3	Navigation Tables, Third Series, 1804-1805	1	14,000
100-100-1-4	Navigation Tables, Fourth Series, 1806-1807	1	14,000
100-100-1-5	Navigation Tables, Fifth Series, 1808-1809	1	14,000
100-100-1-6	Navigation Tables, Sixth Series, 1810-1811	1	14,000
100-100-1-7	Navigation Tables, Seventh Series, 1812-1813	1	14,000
100-100-1-8	Navigation Tables, Eighth Series, 1814-1815	1	14,000
100-100-1-9	Navigation Tables, Ninth Series, 1816-1817	1	14,000
100-100-1-10	Navigation Tables, Tenth Series, 1818-1819	1	14,000



LISTED STOCKS OF PUBLIC COMPANIES OWNED BY DISCLOSOR					DATE
10-SEC-1-1	Energy Corp, 10000 First Street, New York, NY 10001	10	10	10	10/10/10
10-SEC-1-2	Energy Corp, 10000 First Street, New York, NY 10001	10	10	10	10/10/10
10-SEC-1-3	Energy Corp, 10000 First Street, New York, NY 10001	10	10	10	10/10/10
10-SEC-1-4	Energy Corp, 10000 First Street, New York, NY 10001	10	10	10	10/10/10
10-SEC-1-5	Energy Corp, 10000 First Street, New York, NY 10001	10	10	10	10/10/10
10-SEC-1-6	Energy Corp, 10000 First Street, New York, NY 10001	10	10	10	10/10/10
10-SEC-1-7	Energy Corp, 10000 First Street, New York, NY 10001	10	10	10	10/10/10
10-SEC-1-8	Energy Corp, 10000 First Street, New York, NY 10001	10	10	10	10/10/10
10-SEC-1-9	Energy Corp, 10000 First Street, New York, NY 10001	10	10	10	10/10/10
10-SEC-1-10	Energy Corp, 10000 First Street, New York, NY 10001	10	10	10	10/10/10



WINE NAME	WINE TYPE	WINE GRAPE	WINE VINTAGE	WINE PRICE
WINE NAME 1-1	Wine Name 1-1	Wine Grape 1-1	Wine Vintage 1-1	Wine Price 1-1
WINE NAME 2-1	Wine Name 2-1	Wine Grape 2-1	Wine Vintage 2-1	Wine Price 2-1
WINE NAME 3-1	Wine Name 3-1	Wine Grape 3-1	Wine Vintage 3-1	Wine Price 3-1
WINE NAME 4-1	Wine Name 4-1	Wine Grape 4-1	Wine Vintage 4-1	Wine Price 4-1
WINE NAME 5-1	Wine Name 5-1	Wine Grape 5-1	Wine Vintage 5-1	Wine Price 5-1
WINE NAME 6-1	Wine Name 6-1	Wine Grape 6-1	Wine Vintage 6-1	Wine Price 6-1
WINE NAME 7-1	Wine Name 7-1	Wine Grape 7-1	Wine Vintage 7-1	Wine Price 7-1
WINE NAME 8-1	Wine Name 8-1	Wine Grape 8-1	Wine Vintage 8-1	Wine Price 8-1
WINE NAME 9-1	Wine Name 9-1	Wine Grape 9-1	Wine Vintage 9-1	Wine Price 9-1
WINE NAME 10-1	Wine Name 10-1	Wine Grape 10-1	Wine Vintage 10-1	Wine Price 10-1

# 18" DEPTH SIGNATURE SERIES MARINE GRADE HH24

Perlick's HH24 Signature Series 18" depth refrigerated case is built with marine grade stainless steel and is designed to withstand the harsh conditions of a marine environment. The HH24 is built with a heavy-duty frame and is designed to withstand the harsh conditions of a marine environment. The HH24 is built with a heavy-duty frame and is designed to withstand the harsh conditions of a marine environment.

- Heavy-duty construction built to last in the harshest marine environments with a heavy-duty frame and a heavy-duty door.
- 100% stainless steel construction built to last in the harshest marine environments.
- Built-in 18" depth 18" depth refrigerated case built to last in the harshest marine environments.
- Heavy-duty construction built to last in the harshest marine environments.
- Heavy-duty construction built to last in the harshest marine environments.
- Built-in 18" depth 18" depth refrigerated case built to last in the harshest marine environments.
- Heavy-duty construction built to last in the harshest marine environments.
- Heavy-duty construction built to last in the harshest marine environments.
- Heavy-duty construction built to last in the harshest marine environments.
- Heavy-duty construction built to last in the harshest marine environments.



PERLICK SIGNATURE SERIES 18" DEPTH REFRIGERATED CASE - MARINE GRADE				MODEL
HH24-18-1	Heavy-duty 18" depth 18" depth refrigerated case built to last in the harshest marine environments	E		\$1,110
HH24-18-2	Heavy-duty 18" depth 18" depth refrigerated case built to last in the harshest marine environments	E		\$1,110
HH24-18-3	Heavy-duty 18" depth 18" depth refrigerated case built to last in the harshest marine environments	E		\$1,110
HH24-18-4	Heavy-duty 18" depth 18" depth refrigerated case built to last in the harshest marine environments	E		\$1,110
HH24-18-5	Heavy-duty 18" depth 18" depth refrigerated case built to last in the harshest marine environments	E		\$1,110
HH24-18-6	Heavy-duty 18" depth 18" depth refrigerated case built to last in the harshest marine environments	E		\$1,110
HH24-18-7	Heavy-duty 18" depth 18" depth refrigerated case built to last in the harshest marine environments	E		\$1,110



PERLICK SIGNATURE SERIES 18" DEPTH REFRIGERATED CASE - MARINE GRADE				MODEL
HH24-18-8	Heavy-duty 18" depth 18" depth refrigerated case built to last in the harshest marine environments	E		\$1,110
HH24-18-9	Heavy-duty 18" depth 18" depth refrigerated case built to last in the harshest marine environments	E		\$1,110
HH24-18-10	Heavy-duty 18" depth 18" depth refrigerated case built to last in the harshest marine environments	E		\$1,110
HH24-18-11	Heavy-duty 18" depth 18" depth refrigerated case built to last in the harshest marine environments	E		\$1,110
HH24-18-12	Heavy-duty 18" depth 18" depth refrigerated case built to last in the harshest marine environments	E		\$1,110
HH24-18-13	Heavy-duty 18" depth 18" depth refrigerated case built to last in the harshest marine environments	E		\$1,110
HH24-18-14	Heavy-duty 18" depth 18" depth refrigerated case built to last in the harshest marine environments	E		\$1,110



PERLICK SIGNATURE SERIES 18" DEPTH REFRIGERATED CASE - MARINE GRADE				MODEL
HH24-18-15	Heavy-duty 18" depth 18" depth refrigerated case built to last in the harshest marine environments	E		\$1,110
HH24-18-16	Heavy-duty 18" depth 18" depth refrigerated case built to last in the harshest marine environments	E		\$1,110
HH24-18-17	Heavy-duty 18" depth 18" depth refrigerated case built to last in the harshest marine environments	E		\$1,110
HH24-18-18	Heavy-duty 18" depth 18" depth refrigerated case built to last in the harshest marine environments	E		\$1,110
HH24-18-19	Heavy-duty 18" depth 18" depth refrigerated case built to last in the harshest marine environments	E		\$1,110
HH24-18-20	Heavy-duty 18" depth 18" depth refrigerated case built to last in the harshest marine environments	E		\$1,110
HH24-18-21	Heavy-duty 18" depth 18" depth refrigerated case built to last in the harshest marine environments	E		\$1,110



- ENERGY STAR Qualified Model

E - Industry Exclusive Model

Prices & availability subject to change without notice

orders@modedistributing.com





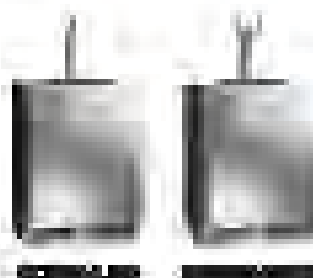
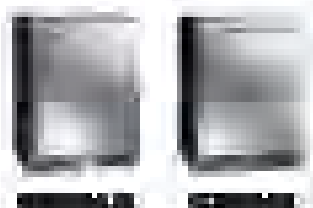
A full-page advertisement for the Perlick C-Series refrigerator. The background is a photograph of a bedroom with a bed covered in a purple duvet and pillows. On the left, a dark wood nightstand holds a Perlick refrigerator with its door open, revealing a bottle of beer on the door shelf and a small lamp inside. The Perlick logo is centered over the bed in a white serif font, and 'C-Series' is written in a smaller white sans-serif font to its right.

# Perlick®

C-Series

\_\_\_\_\_

- High-temperature, high-pressure, and high-shear energy with respect to the solid solution mechanism for heat and leaching
- High-temperature, high-pressure, and high-shear energy
- Chemical processes that occur in the solid solution mechanism for heat and leaching
- Solid solution mechanism for heat and leaching with respect to the solid solution mechanism
- Solid solution mechanism for heat and leaching
- Solid solution mechanism for heat and leaching
- Solid solution mechanism for heat and leaching
- Solid solution mechanism for heat and leaching
- Solid solution mechanism for heat and leaching



Project Name	Location	Year
Project 1	Location 1	2010
Project 2	Location 2	2011
Project 3	Location 3	2012
Project 4	Location 4	2013
Project 5	Location 5	2014
Project 6	Location 6	2015
Project 7	Location 7	2016

[illegible]











Perlick®

ICE MAKERS

## 15" CLEAR ICE MAKERS INDOOR/OUTDOOR H50

Manufactured by Perlick Corporation, 15" Clear Ice Makers are designed to produce clear, chunky ice cubes that melt quickly and are perfect for use in a variety of settings. The H50 series is available in both indoor and outdoor models, making it a versatile choice for any business or home.

- 15" Clear Ice Makers produce clear, chunky ice cubes
- 15" Clear Ice Makers are available in both indoor and outdoor models
- 15" Clear Ice Makers are designed to produce clear, chunky ice cubes
- 15" Clear Ice Makers are designed to produce clear, chunky ice cubes
- 15" Clear Ice Makers are designed to produce clear, chunky ice cubes
- 15" Clear Ice Makers are designed to produce clear, chunky ice cubes
- 15" Clear Ice Makers are designed to produce clear, chunky ice cubes
- 15" Clear Ice Makers are designed to produce clear, chunky ice cubes

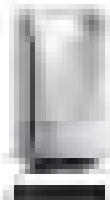
Top 15" Clear Ice Maker



Top 15" Clear Ice Maker

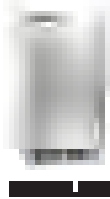


Top 15" Clear Ice Maker



### 15" CLEAR ICE MAKERS INDOOR/OUTDOOR - 15" CLEAR ICE MAKERS

Model	Description	Price
15" Clear Ice Maker (Indoor/Outdoor)	15" Clear Ice Maker (Indoor/Outdoor)	\$1,499
15" Clear Ice Maker (Indoor/Outdoor)	15" Clear Ice Maker (Indoor/Outdoor)	\$1,499
15" Clear Ice Maker (Indoor/Outdoor)	15" Clear Ice Maker (Indoor/Outdoor)	\$1,499



### 15" CLEAR ICE MAKERS INDOOR/OUTDOOR - 15" CLEAR ICE MAKERS

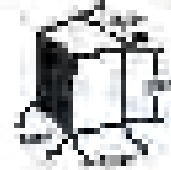
Model	Description	Price
15" Clear Ice Maker (Indoor/Outdoor)	15" Clear Ice Maker (Indoor/Outdoor)	\$1,499
15" Clear Ice Maker (Indoor/Outdoor)	15" Clear Ice Maker (Indoor/Outdoor)	\$1,499
15" Clear Ice Maker (Indoor/Outdoor)	15" Clear Ice Maker (Indoor/Outdoor)	\$1,499

## 15" CUBELET ICE MAKERS INDOOR/OUTDOOR H80

Perlick's 15" Cubelet Ice Maker Series is designed to provide a reliable, efficient, and easy-to-use ice-making solution for indoor and outdoor use. The series includes a variety of models to meet your specific needs, from small commercial spaces to large outdoor venues.

- Fastest ice-making cycle in the industry
- Energy-efficient design
- Compact footprint
- Easy to install
- Durable construction
- Customizable options
- Available in multiple colors
- Available in multiple sizes
- Available in multiple finishes
- Available in multiple capacities
- Available in multiple configurations
- Available in multiple locations

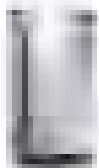
### 15" CUBELET ICE MAKER



### 15" CUBELET ICE MAKER



### 15" CUBELET ICE MAKER



15" CUBELET ICE MAKER

15" CUBELET ICE MAKER - 15" CUBELET ICE MAKER - 15" CUBELET ICE MAKER			Model
PERLICK-15	15" CUBELET ICE MAKER - 15" CUBELET ICE MAKER - 15" CUBELET ICE MAKER	15" CUBELET ICE MAKER - 15" CUBELET ICE MAKER - 15" CUBELET ICE MAKER	15" CUBELET ICE MAKER
PERLICK-15	15" CUBELET ICE MAKER - 15" CUBELET ICE MAKER - 15" CUBELET ICE MAKER	15" CUBELET ICE MAKER - 15" CUBELET ICE MAKER - 15" CUBELET ICE MAKER	15" CUBELET ICE MAKER
PERLICK-15	15" CUBELET ICE MAKER - 15" CUBELET ICE MAKER - 15" CUBELET ICE MAKER	15" CUBELET ICE MAKER - 15" CUBELET ICE MAKER - 15" CUBELET ICE MAKER	15" CUBELET ICE MAKER



15" CUBELET ICE MAKER

15" CUBELET ICE MAKER - 15" CUBELET ICE MAKER - 15" CUBELET ICE MAKER			Model
PERLICK-15	15" CUBELET ICE MAKER - 15" CUBELET ICE MAKER - 15" CUBELET ICE MAKER	15" CUBELET ICE MAKER - 15" CUBELET ICE MAKER - 15" CUBELET ICE MAKER	15" CUBELET ICE MAKER
PERLICK-15	15" CUBELET ICE MAKER - 15" CUBELET ICE MAKER - 15" CUBELET ICE MAKER	15" CUBELET ICE MAKER - 15" CUBELET ICE MAKER - 15" CUBELET ICE MAKER	15" CUBELET ICE MAKER
PERLICK-15	15" CUBELET ICE MAKER - 15" CUBELET ICE MAKER - 15" CUBELET ICE MAKER	15" CUBELET ICE MAKER - 15" CUBELET ICE MAKER - 15" CUBELET ICE MAKER	15" CUBELET ICE MAKER



- ENERGY STAR Qualified Model

E - Industry Exclusive Model

Prices & availability subject to change without notice

orders@modedistributing.com









Perlick®

70" MOBILE BAR.

## 70" MOBILE BAR RMB

**Perlick's Tobin Ellis Signature Series Residential Mobile Bars** bring the best designs featured at the world's top bars and restaurants to the comfort of your own home! Perlick's line of mobile bars will elevate your home entertaining experience while making you feel like a professional mixologist utilizing our "bartender cockpit" design and luxury finishes.

- Luxury finishing with **eco-friendly recycled leather in Toffee Crocodile** complementing the chic **off-white Vanilla Sugar solid surface bar top** with custom smooth, rounded edges and corners for added comfort
- The bar counter features an **extra-large inlaid 8" work board in a beautiful antique copper finish**, enhancing the grandeur aesthetic while keeping the bar surface clean and free of drips and spills
- Extend your celebrations into the night with **undercounter LED task lighting** so you can continue toasting with friends and in low light settings
- Adds the **ultimate in flexibility**: move the Limited Edition Mobile Bar to your outdoor entertaining space for a patio party, then move back indoors to store
- Add ample capacity for any size soiree: capable of storing **up to 27 liters, 36 pieces of glassware, 40 cans or bottles of soda/beer, 3 types of ice, and more** depending on set up – all hidden from your guests' line of sight so they can focus on your beautiful setting

**Inlaid Copper Workboard**



**Ample capacity for 3 types of Ice**



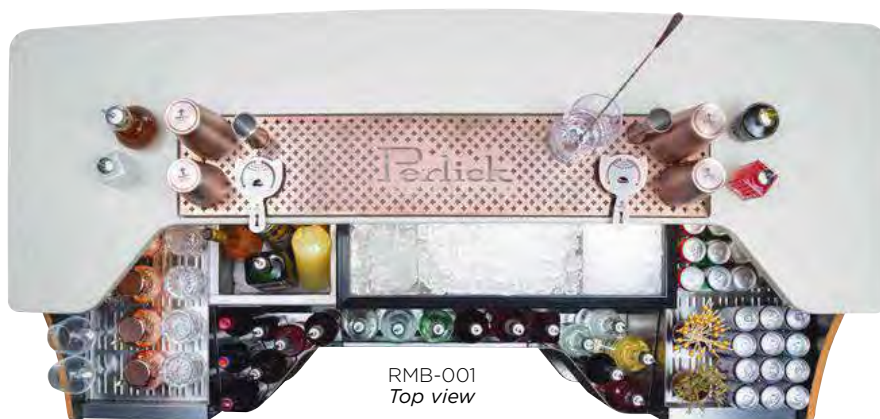
**NSF-Approved**



RMB-001  
*Inside view*



RMB-001  
*Front view*



RMB-001  
*Top view*

### 70" TOBIN ELLIS SIGNATURE SERIES LIMITED EDITION MOBILE BAR - INDOOR/OUTDOOR

UMRP UPDATED 2-5-24

RMB-001

70" Tobin Ellis Signature Series Limited Edition Mobile Bar: two drainboards, bottle well, ice chest, and bottle rail

**\$23,199**



- ENERGY STAR Qualified Model

E - Industry Exclusive Model

[orders@modedistributing.com](mailto:orders@modedistributing.com)

Prices & availability subject to change without notice



# PERLICK 70" MOBILE BAR

## 70" MOBILE BAR RMB

The **Tobin Ellis Signature Series Mobile Bar** will help you elevate your home entertaining experience and transform into a mixologist through design with high-end home entertaining in mind.

- Easily move the bar anywhere inside or outside of your home for expanding your upscale home entertaining needs
- Two drainboards, insulated bottle well, insulated ice chest, and bottle rail
- Available in 46", 70" with 2 drainboards, and 70" with hand sink configurations

### All Tobin Ellis Signature Series Mobile Bars feature:

- Black laminate exterior with white quartz engineered solid surface top
- Ample lower storage area for glasses, dry goods, canned goods, or beverages
- LED task lighting for operating in the evening and low light settings
- 42" stainless speed rail that holds up to 20 standard liquor bottles
- 30" insulated ice chest with sliding cover to store plenty of ice for any occasion
- 12" insulated bottle well to store juices, syrups, mix, etc. in ice to keep chilled for serving
- Ice melt drainage tank to capture and easily remove draining water
- Locking 5" 304 stainless steel casters, for corrosion resistance, with polyurethane tread

White Laminate Engineered Surface



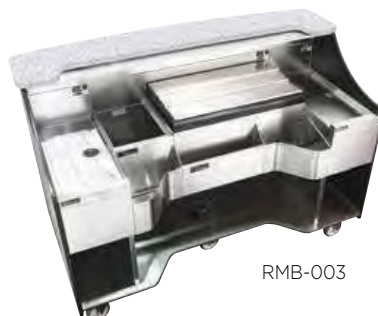
Optional Sink and Drainboard



NSF Approved



RMB-002



RMB-003

### 70" TOBIN ELLIS SIGNATURE SERIES MOBILE BAR - INDOOR/OUTDOOR UMRP UPDATED 2-5-24

RMB-002	70" Tobin Ellis Signature Series Mobile Bar: one drainboard, bottle well, ice chest, bottle rail, hand wash sink, hot water heater	<b>\$21,399</b>
RMB-003	70" Tobin Ellis Signature Series Mobile Bar: two drainboards, bottle well, ice chest, and bottle rail	<b>\$18,149</b>



RMB-004

### 46" TOBIN ELLIS SIGNATURE SERIES MOBILE BAR - INDOOR/OUTDOOR UMRP UPDATED 2-5-24

RMB-004	46" Tobin Ellis Signature Series Mobile Bar: bottle well, ice chest, and bottle well	<b>\$13,249</b>
---------	--	-----------------



- ENERGY STAR Qualified Model

E - Industry Exclusive Model

Prices & availability subject to change without notice

[orders@modedistributing.com](mailto:orders@modedistributing.com)







# Perlick®

24" MOBILE TAP

## 24" MOBILE TAP HP24TS

## HOW IT WEARNS

- **Stress** is a response to a stimulus
- **Stressors** are the stimuli that cause stress
- **Stressors** can be physical, chemical, or biological



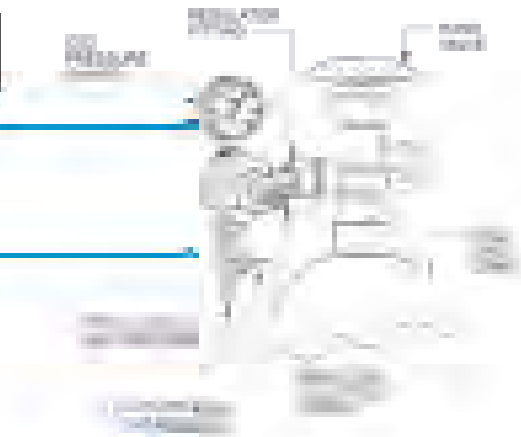
## 24" MOBILE TAP HP24TS

### BEER BASICS - TROUBLESHOOTING INFO

Problems with beer quality, volume, or flow can be caused by a number of factors. This information is not intended to be a substitute for professional advice. For more information, please contact your distributor or Perlick.

#### PROBLEM: No beer is coming out of the tap

- Check the pump. Is the pump running properly? Is the pump switch turned on? Is the pump plugged in?
- Make sure all lines have correct gas position. Make sure gas is on or off as needed.



#### PROBLEM: Flat beer

- Check the pump. Is the pump running properly? Is the pump switch turned on? Is the pump plugged in?
- Make sure all lines have correct gas position. Make sure gas is on or off as needed.



#### PROBLEM: Foamy beer

- Check the pump. Is the pump running properly? Is the pump switch turned on? Is the pump plugged in?
- Make sure all lines have correct gas position. Make sure gas is on or off as needed.
- Make sure the gas is not too high. The gas should be set at 12-14 psi. If the gas is too high, the beer will be too foamy.
- Make sure the beer is not too cold. The beer should be served at 36-42°F. If the beer is too cold, it will be too foamy.

36°-42°F



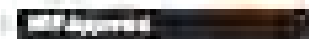
- ENERGY STAR Qualified Model

E - Industry Exclusive Model

Prices & availability subject to change without notice

[orders@modedistributing.com](mailto:orders@modedistributing.com)

## PIBUCK HOWL TALK

[illegible]



[Home](#)
[About Us](#)
[Services](#)
[Testimonials](#)
[Contact Us](#)

FUNDING DETAILS		YTD
AMOUNT	2017 State Reg. II Funding and Core Budgeting Daycare for 1000 Children	\$1,840
AMOUNT	2017 State Reg. II Funding and Core Budgeting Daycare for 1000 Children	\$1,840
AMOUNT	2017 State Reg. II Funding and Core Budgeting Daycare for 1000 Children	\$1,700
AMOUNT	2017 State Reg. II Funding and Core Budgeting Daycare for 1000 Children	\$1,700









# Perlick®

UNDERCOUNTER ACCESSORIES

## TAP ACCESSORIES

### WITH FORWARD SEALING FAUCETS, YOU'LL NEVER LOOK BACK

- 304 stainless steel construction meets NSF standards
- Multifunctional faucets with optional included
- Patented forward sealing design eliminates need for a valve stem exposed to beer and air
- Sport single handle, optional, allowing multifunctional drinking after each pour
- Stainless steel handle to collect
- NSF approved



Perlick's patented forward sealing design eliminates the need for a valve stem exposed to beer and air.



- ENERGY STAR Qualified Model

E - Industry Exclusive Model

[orders@modedistributing.com](mailto:orders@modedistributing.com)

Prices & availability subject to change without notice



## TAP ACCESSORIES

### THE MOST SANITARY BEVERAGE FAUCET EVER!

1. Available for domestic or imported bags  
Supports the cutting mechanism & positive sealed position  
Ensures freedom of the handle
2. Solid stainless steel main stem for all ports that could be product  
Protects flavor of beer or wine
3. Pressing front seal  
Features a contoured profile to provide enhanced surface  
contact for a positive seal
4. Spout angle is more vertical
  - Provides for better pour and draining
  - Drop off begins just beyond the cutting, so full area for  
beer to collect

### LOW PEOPLE COUPLES

- Available for domestic or imported bags
- Space saving design, availability
- Stronger contact area, no need for additional  
cutting the complex, the drinking beverage
- Easy to operate, low height
- Perlick's quality, complete with the availability  
of domestic and imported lines

"Choose your equipment, imported family  
equipment, some purchased with your equipment  
equipment, up to the quality"



- ENERGY STAR Qualified Model

E - Industry Exclusive Model

Prices & availability subject to change without notice

[orders@modedistributing.com](mailto:orders@modedistributing.com)

Category	Percentage	Count
1. <b>General Information</b>	100%	100
2. <b>Demographics</b>	100%	100
3. <b>Attitudes and Beliefs</b>	100%	100
4. <b>Behavioral Intent</b>	100%	100
5. <b>Perceived Barriers</b>	100%	100
6. <b>Perceived Benefits</b>	100%	100
7. <b>Perceived Ease of Use</b>	100%	100
8. <b>Perceived Usefulness</b>	100%	100
9. <b>Perceived Social Influence</b>	100%	100
10. <b>Perceived Facilitating Conditions</b>	100%	100
11. <b>Perceived Performance Expectancy</b>	100%	100
12. <b>Perceived Effort Expectancy</b>	100%	100
13. <b>Perceived Hedonic Motivation</b>	100%	100
14. <b>Perceived Habit Formation</b>	100%	100
15. <b>Perceived Social Norms</b>	100%	100
16. <b>Perceived Trust</b>	100%	100
17. <b>Perceived Privacy</b>	100%	100
18. <b>Perceived Security</b>	100%	100
19. <b>Perceived Reliability</b>	100%	100
20. <b>Perceived Availability</b>	100%	100
21. <b>Perceived Interactivity</b>	100%	100
22. <b>Perceived Personalization</b>	100%	100
23. <b>Perceived Customization</b>	100%	100
24. <b>Perceived Control</b>	100%	100
25. <b>Perceived Transparency</b>	100%	100
26. <b>Perceived Accountability</b>	100%	100
27. <b>Perceived Responsibility</b>	100%	100
28. <b>Perceived Fairness</b>	100%	100
29. <b>Perceived Justice</b>	100%	100
30. <b>Perceived Satisfaction</b>	100%	100
31. <b>Perceived Loyalty</b>	100%	100
32. <b>Perceived Commitment</b>	100%	100
33. <b>Perceived Identification</b>	100%	100
34. <b>Perceived Involvement</b>	100%	100
35. <b>Perceived Engagement</b>	100%	100
36. <b>Perceived Flow</b>	100%	100
37. <b>Perceived Enjoyment</b>	100%	100
38. <b>Perceived Fun</b>	100%	100
39. <b>Perceived Interest</b>	100%	100
40. <b>Perceived Curiosity</b>	100%	100
41. <b>Perceived Novelty</b>	100%	100
42. <b>Perceived Excitement</b>	100%	100
43. <b>Perceived Surprise</b>	100%	100
44. <b>Perceived Wonder</b>	100%	100
45. <b>Perceived Awe</b>	100%	100
46. <b>Perceived Amusement</b>	100%	100
47. <b>Perceived Delight</b>	100%	100
48. <b>Perceived Happiness</b>	100%	100
49. <b>Perceived Well-being</b>	100%	100
50. <b>Perceived Life Satisfaction</b>	100%	100
51. <b>Perceived Meaning</b>	100%	100
52. <b>Perceived Purpose</b>	100%	100
53. <b>Perceived Passion</b>	100%	100
54. <b>Perceived Commitment</b>	100%	100
55. <b>Perceived Identification</b>	100%	100
56. <b>Perceived Involvement</b>	100%	100
57. <b>Perceived Engagement</b>	100%	100
58. <b>Perceived Flow</b>	100%	100
59. <b>Perceived Enjoyment</b>	100%	100
60. <b>Perceived Fun</b>	100%	100
61. <b>Perceived Interest</b>	100%	100
62. <b>Perceived Curiosity</b>	100%	100
63. <b>Perceived Novelty</b>	100%	100
64. <b>Perceived Excitement</b>	100%	100
65. <b>Perceived Surprise</b>	100%	100
66. <b>Perceived Wonder</b>	100%	100
67. <b>Perceived Awe</b>	100%	100
68. <b>Perceived Amusement</b>	100%	100
69. <b>Perceived Delight</b>	100%	100
70. <b>Perceived Happiness</b>	100%	100
71. <b>Perceived Well-being</b>	100%	100
72. <b>Perceived Life Satisfaction</b>	100%	100
73. <b>Perceived Meaning</b>	100%	100
74. <b>Perceived Purpose</b>	100%	100
75. <b>Perceived Passion</b>	100%	100
76. <b>Perceived Commitment</b>	100%	100
77. <b>Perceived Identification</b>	100%	100
78. <b>Perceived Involvement</b>	100%	100
79. <b>Perceived Engagement</b>	100%	100
80. <b>Perceived Flow</b>	100%	100
81. <b>Perceived Enjoyment</b>	100%	100
82. <b>Perceived Fun</b>	100%	100
83. <b>Perceived Interest</b>	100%	100
84. <b>Perceived Curiosity</b>	100%	100
85. <b>Perceived Novelty</b>	100%	100
86. <b>Perceived Excitement</b>	100%	100
87. <b>Perceived Surprise</b>	100%	100
88. <b>Perceived Wonder</b>	100%	100
89. <b>Perceived Awe</b>	100%	100
90. <b>Perceived Amusement</b>	100%	100
91. <b>Perceived Delight</b>	100%	100
92. <b>Perceived Happiness</b>	100%	100
93. <b>Perceived Well-being</b>	100%	100
94. <b>Perceived Life Satisfaction</b>	100%	100
95. <b>Perceived Meaning</b>	100%	100
96. <b>Per</b>		

- 

\_\_\_\_\_

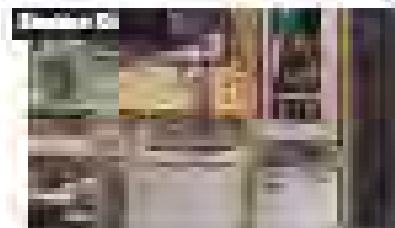
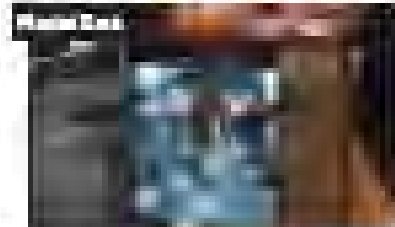
T. *12-13-14-15-16-17-18-19-20-21-22-23-24-25-26-27-28-29-30-31-32-33-34-35-36-37-38-39-40-41-42-43-44-45-46-47-48-49-50-51-52-53-54-55-56-57-58-59-60-61-62-63-64-65-66-67-68-69-70-71-72-73-74-75-76-77-78-79-80-81-82-83-84-85-86-87-88-89-90-91-92-93-94-95-96-97-98-99-100-101-102-103-104-105-106-107-108-109-110-111-112-113-114-115-116-117-118-119-120-121-122-123-124-125-126-127-128-129-130-131-132-133-134-135-136-137-138-139-140-141-142-143-144-145-146-147-148-149-150-151-152-153-154-155-156-157-158-159-160-161-162-163-164-165-166-167-168-169-170-171-172-173-174-175-176-177-178-179-180-181-182-183-184-185-186-187-188-189-190-191-192-193-194-195-196-197-198-199-200-201-202-203-204-205-206-207-208-209-210-211-212-213-214-215-216-217-218-219-220-221-222-223-224-225-226-227-228-229-230-231-232-233-234-235-236-237-238-239-240-241-242-243-244-245-246-247-248-249-250-251-252-253-254-255-256-257-258-259-260-261-262-263-264-265-266-267-268-269-270-271-272-273-274-275-276-277-278-279-280-281-282-283-284-285-286-287-288-289-290-291-292-293-294-295-296-297-298-299-300-301-302-303-304-305-306-307-308-309-310-311-312-313-314-315-316-317-318-319-320-321-322-323-324-325-326-327-328-329-330-331-332-333-334-335-336-337-338-339-340-341-342-343-344-345-346-347-348-349-350-351-352-353-354-355-356-357-358-359-360-361-362-363-364-365-366-367-368-369-370-371-372-373-374-375-376-377-378-379-380-381-382-383-384-385-386-387-388-389-390-391-392-393-394-395-396-397-398-399-400-401-402-403-404-405-406-407-408-409-410-411-412-413-414-415-416-417-418-419-420-421-422-423-424-425-426-427-428-429-430-431-432-433-434-435-436-437-438-439-440-441-442-443-444-445-446-447-448-449-450-451-452-453-454-455-456-457-458-459-460-461-462-463-464-465-466-467-468-469-470-471-472-473-474-475-476-477-478-479-480-481-482-483-484-485-486-487-488-489-490-491-492-493-494-495-496-497-498-499-500-501-502-503-504-505-506-507-508-509-510-511-512-513-514-515-516-517-518-519-520-521-522-523-524-525-526-527-528-529-530-531-532-533-534-535-536-537-538-539-540-541-542-543-544-545-546-547-548-549-550-551-552-553-554-555-556-557-558-559-560-561-562-563-564-565-566-567-568-569-570-571-572-573-574-575-576-577-578-579-580-581-582-583-584-585-586-587-588-589-590-591-592-593-594-595-596-597-598-599-600-601-602-603-604-605-606-607-608-609-610-611-612-613-614-615-616-617-618-619-620-621-622-623-624-625-626-627-628-629-630-631-632-633-634-635-636-637-638-639-640-641-642-643-644-645-646-647-648-649-650-651-652-653-654-655-656-657-658-659-660-661-662-663-664-665-666-667-668-669-670-671-672-673-674-675-676-677-678-679-680-681-682-683-684-685-686-687-688-689-690-691-692-693-694-695-696-697-698-699-700-701-702-703-704-705-706-707-708-709-710-711-712-713-714-715-716-717-718-719-720-721-722-723-724-725-726-727-728-729-730-731-732-733-734-735-736-737-738-739-740-741-742-743-744-745-746-747-748-749-750-751-752-753-754-755-756-757-758-759-760-761-762-763-764-765-766-767-768-769-770-771-772-773-774-775-776-777-778-779-780-781-782-783-784-785-786-787-788-789-790-791-792-793-794-795-796-797-798-799-800-801-802-803-804-805-806-807-808-809-810-811-812-813-814-815-816-817-818-819-820-821-822-823-824-825-826-827-828-829-830-831-832-833-834-835-836-837-838-839-840-841-842-843-844-845-846-847-848-849-850-851-852-853-854-855-856-857-858-859-860-861-862-863-864-865-866-867-868-869-870-871-872-873-874-875-876-877-878-879-880-881-882-883-884-885-886-887-888-889-890-891-892-893-894-895-896-897-898-899-900-901-902-903-904-905-906-907-908-909-910-911-912-913-914-915-916-917-918-919-920-921-922-923-924-925-926-927-928-929-930-931-932-933-934-935-936-937-938-939-940-941-942-943-944-945-946-947-948-949-950-951-952-953-954-955-956-957-958-959-960-961-962-963-964-965-966-967-968-969-970-971-972-973-974-975-976-977-978-979-980-981-982-983-984-985-986-987-988-989-990-991-992-993-994-995-996-997-998-999-1000-1001-1002-1003-1004-1005-1006-1007-1008-1009-1010-1011-1012-1013-1014-1015-1016-1017-1018-1019-1020-1021-1022-1023-1024-1025-1026-1027-1028-1029-1030-1031-1032-1033-1034-1035-1036-1037-1038-1039-1040-1041-1042-1043-104*

Category	Item	Price
Electronics	Apple iPhone 12 (128GB) - Unlocked	\$1,299.00
	Samsung Galaxy S21 (128GB) - Unlocked	\$1,199.99
Home & Garden	Philips Hue White and Color Ambiance A19 LED Smart Bulb (4-pack)	\$149.99
	Amazon Echo Dot (4th Gen) - Charcoal	\$49.99
Clothing	Levi's Men's Slim-Fit Blue Denim Jeans (32x34)	\$69.00
	Adidas Women's Essentials 3-Stripes Hoodie	\$54.99
Books	The Hobbit and The Lord of the Rings: The Fellowship of the Ring (Box Set)	\$149.99
	Harry Potter and the Chamber of Secrets (Hardcover)	\$19.99
Food & Beverage	Organic Valley Organic Whole Milk Yogurt (32 oz)	\$4.99
	Blue Bird Coffee Co. Cold Brew Coffee (16 oz)	\$5.99
Toys	LEGO Star Wars The Mandalorian Grogu (Baby Yoda) Building Set	\$149.99
	Play-Doh Modeling Clay (10-Pack)	\$24.99

## UNDERCOUNTER ACCESSORIES

Discover the wide range of accessories that will enhance your Perlick undercounter refrigeration. Whether you're upgrading existing units or want to start fresh, getting your Perlick setup exactly right with essential undercounter products is the first step to ensuring Perlick meets your needs. Discover how to design with the products.

- Discover the wide range of Perlick accessories that will enhance your undercounter refrigeration.
- Discover the wide range of Perlick accessories that will enhance your undercounter refrigeration.
- Discover the wide range of Perlick accessories that will enhance your undercounter refrigeration.
- Discover the wide range of Perlick accessories that will enhance your undercounter refrigeration.
- Discover the wide range of Perlick accessories that will enhance your undercounter refrigeration.



PERLICK UNDERCOUNTER REFRIGERATION		PRICE
PERLICK-1000	1000 Series Perlick undercounter refrigerator	\$1,100
PERLICK-1000E	1000 Series Perlick undercounter refrigerator	\$1,100

PERLICK UNDERCOUNTER REFRIGERATION (ELECTRIC)		PRICE
PERLICK-1000E	1000 Series Perlick undercounter refrigerator (electric)	\$1,100
PERLICK-1000E	1000 Series Perlick undercounter refrigerator (electric)	\$1,100
PERLICK-1000E	1000 Series Perlick undercounter refrigerator (electric)	\$1,100
PERLICK-1000E	1000 Series Perlick undercounter refrigerator (electric)	\$1,100

PERLICK UNDERCOUNTER REFRIGERATION (ELECTRIC)		PRICE
PERLICK-1000E	1000 Series Perlick undercounter refrigerator (electric)	\$1,100
PERLICK-1000E	1000 Series Perlick undercounter refrigerator (electric)	\$1,100

PERLICK UNDERCOUNTER REFRIGERATION (ELECTRIC)		PRICE
PERLICK-1000E	1000 Series Perlick undercounter refrigerator (electric)	\$1,100
PERLICK-1000E	1000 Series Perlick undercounter refrigerator (electric)	\$1,100
PERLICK-1000E	1000 Series Perlick undercounter refrigerator (electric)	\$1,100
PERLICK-1000E	1000 Series Perlick undercounter refrigerator (electric)	\$1,100



- ENERGY STAR Qualified Model

E - Industry Exclusive Model

Prices & availability subject to change without notice

orders@modedistributing.com

## UNDERCOUNTER ACCESSORIES

[illegible][illegible]





# PERLICK CORPORATION RESIDENTIAL REFRIGERATION LIMITED WARRANTY

[illegible]

~~[REDACTED]~~

[illegible]

1. The first step in the process is to identify the problem or issue that needs to be addressed. This involves gathering information and understanding the context of the situation.

2. Once the problem is identified, the next step is to define the objectives and goals of the project. This helps to clarify what is to be achieved and provides a clear direction for the team.

3. The third step is to develop a plan or strategy to address the problem. This involves breaking down the problem into smaller, manageable tasks and determining the resources needed to complete them.

4. The fourth step is to implement the plan. This involves putting the strategy into action and monitoring progress to ensure that the project is on track.

5. The final step is to evaluate the results of the project. This involves assessing the outcomes against the objectives and goals and identifying any lessons learned for future projects.

~~\_\_\_\_\_~~

[illegible]

\_\_\_\_\_

[illegible]

**WEEK 1: INTRODUCTION TO THE COURSE**  
 1.1. The Role of the Teacher  
 1.2. The Role of the Student  
 1.3. The Role of the School  
 1.4. The Role of the Society  
 1.5. The Role of the Family

1. The first step in the process is to identify the problem or issue that needs to be addressed. This involves gathering information and understanding the context of the situation.

[illegible]

\_\_\_\_\_

\_\_\_\_\_

\_\_\_\_\_

\_\_\_\_\_

\_\_\_\_\_

\_\_\_\_\_

\_\_\_\_\_

The following information is provided for the purpose of providing a general overview of the information contained in the document. It is not intended to be a substitute for the full text of the document.

[illegible]

\_\_\_\_\_

\_\_\_\_\_

\_\_\_\_\_

\_\_\_\_\_



# MODE

superior products by design

## MODEANAHEIM

4945 E. Hunter Avenue  
Anaheim, CA 92807  
P 714.523.1511  
F 714.522.0875

## MODEAURORA

16265 E. 33rd Drive Suite 20  
Aurora, CO 80011  
P 303.934.2317  
F 303.934.3956

Toll Free 1.800.836.8246

[orders@modedistributing.com](mailto:orders@modedistributing.com)