

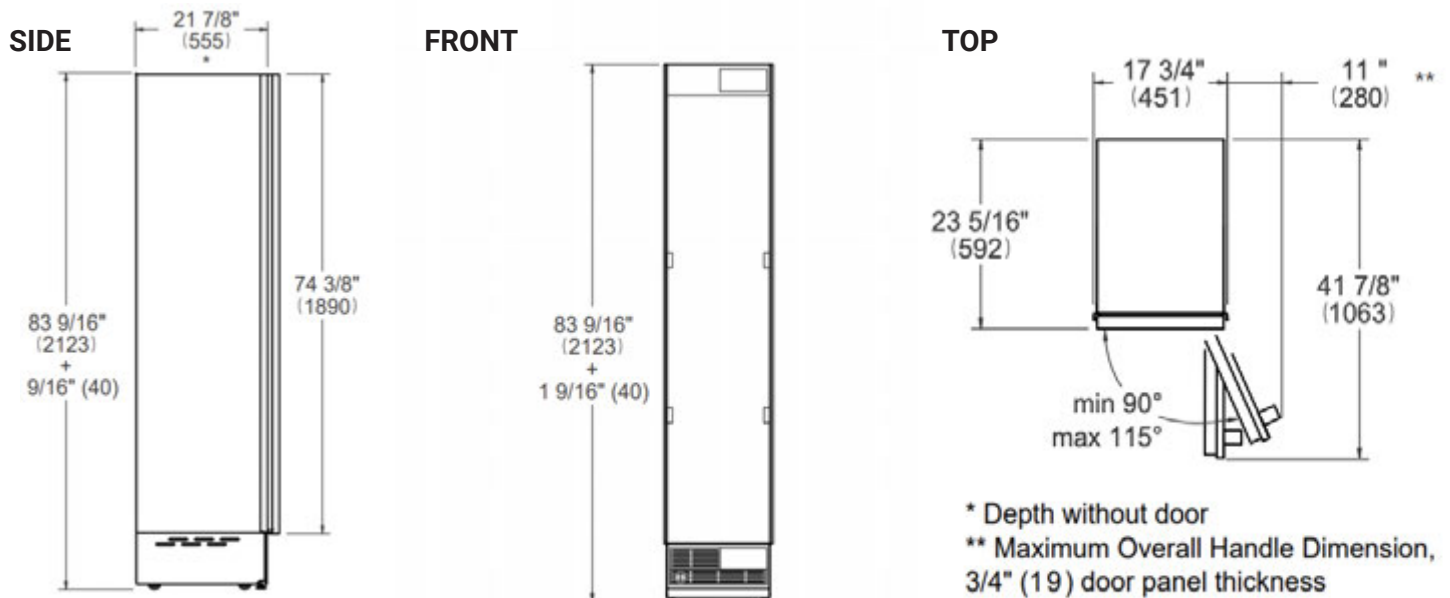
VITARA

INSTALLATION | GUIDE

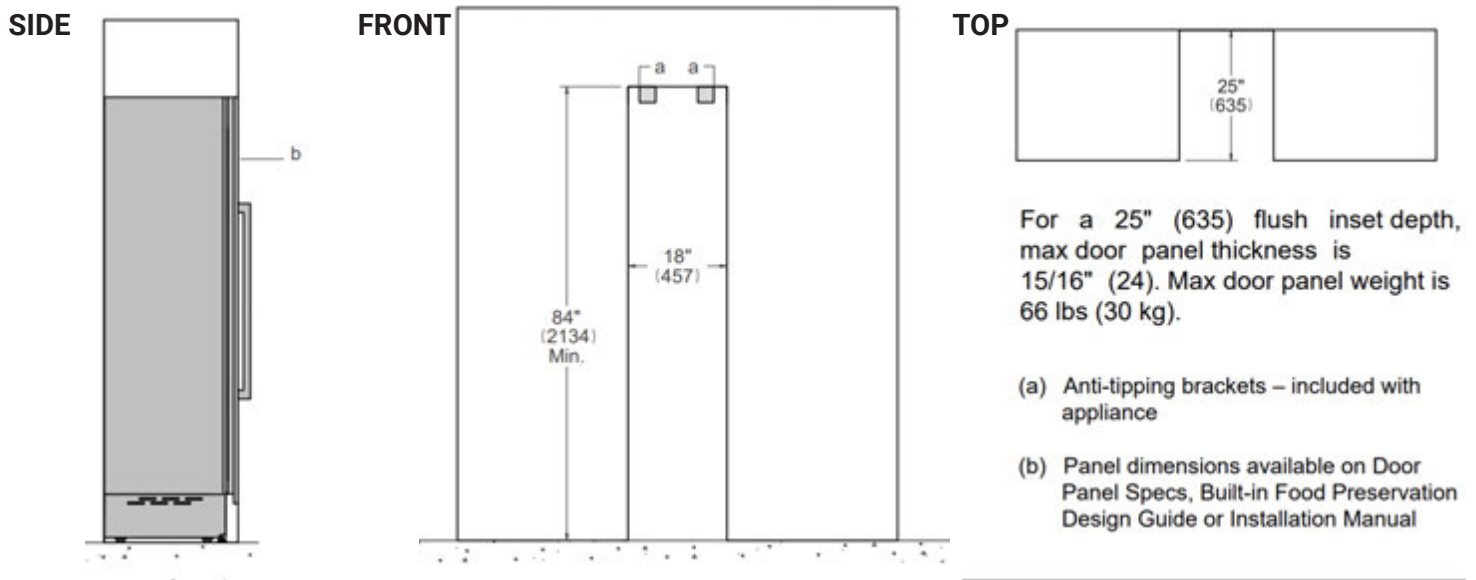


VBCF0861EWE

18" Built-In Freezer with Ice maker



CUTOUT DIMENSIONS



INSTALLATION REQUIREMENTS

If the appliance(s) is not connected through the side profile trims to secured cabinetry anti-tip brackets must be installed.

A separate circuit breaker servicing only this appliance is recommended

ELECTRICAL + WATER CONNECTION



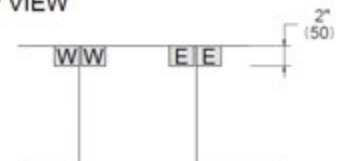
A properly-grounded, horizontally-mounted electrical receptacle should be installed according to this drawing.



To connect to the water supply system, use a 1/4" waterline with a minimum length of 60" (1500).

Connection(s) placement within the opening may require additional cabinet depth.

TOP VIEW



FRONT VIEW

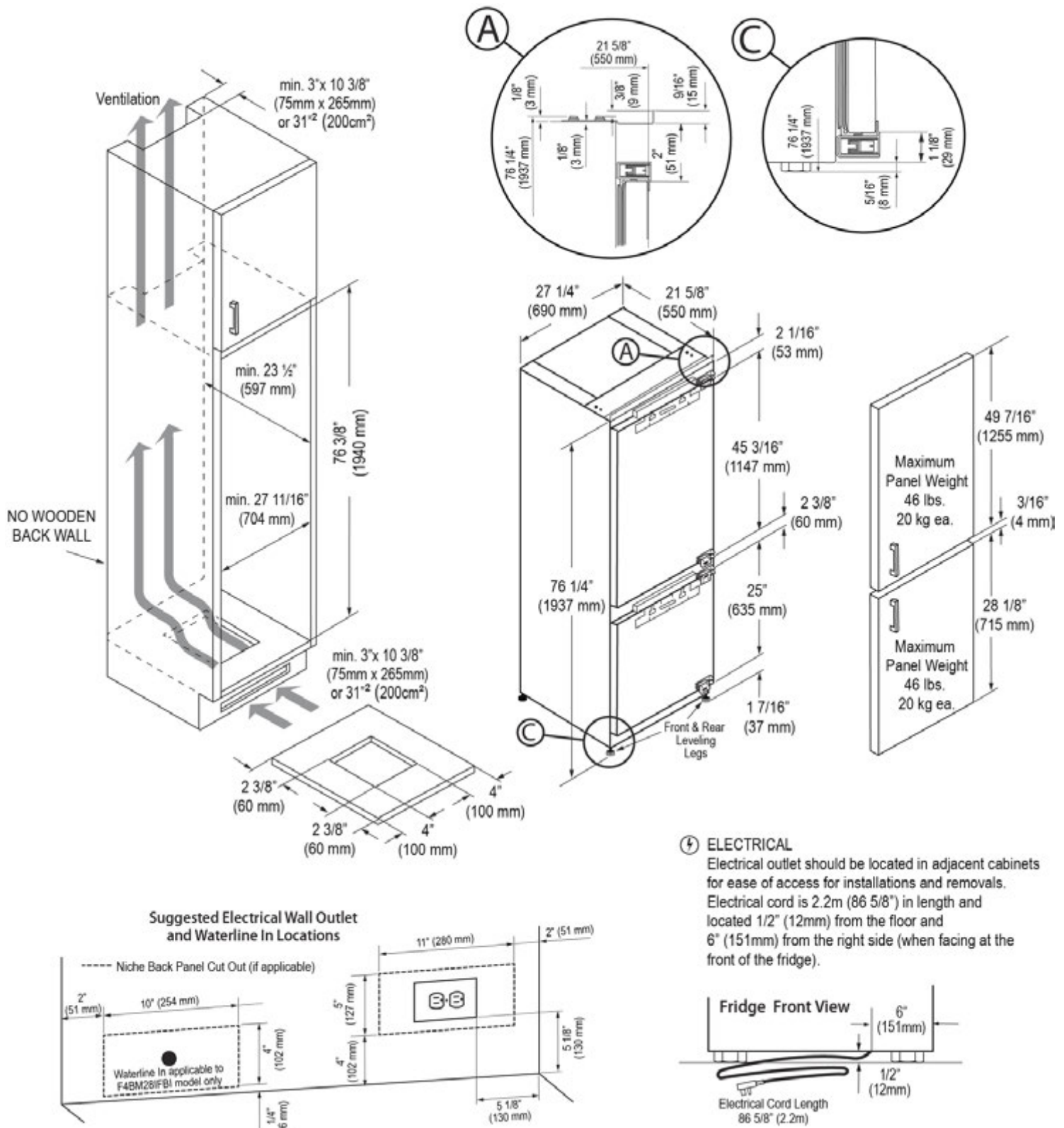


22" Built-In Bottom Freezer Refrigerator with Ice maker



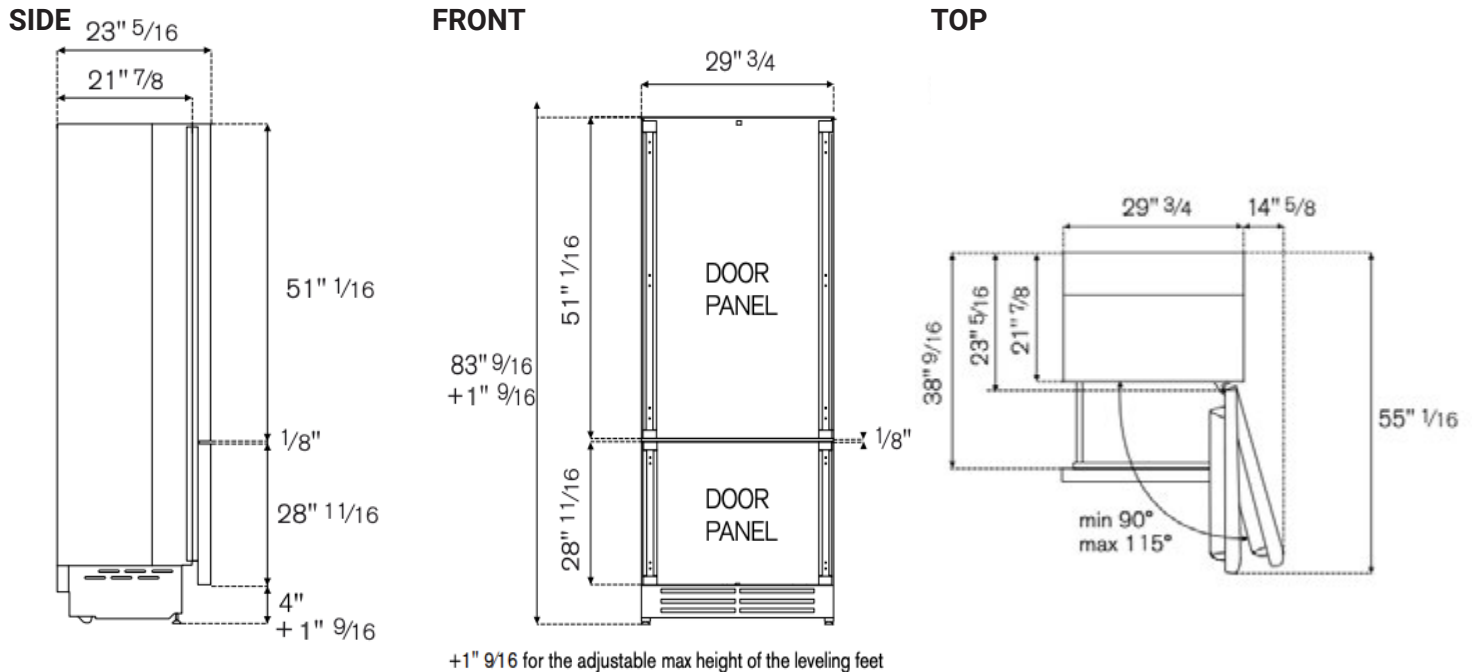
VBBM1200EWEI

28" Built-In Bottom Freezer Refrigerator with Ice maker

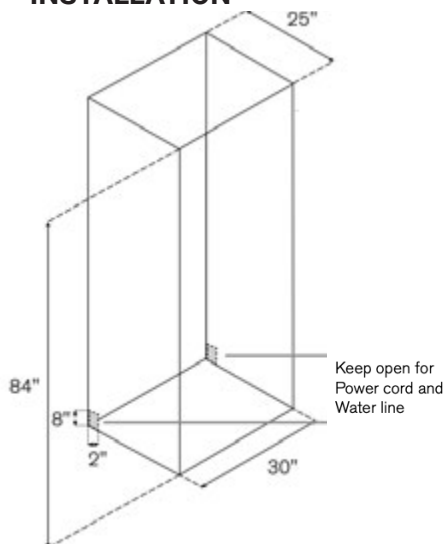


VBBM1601EWE

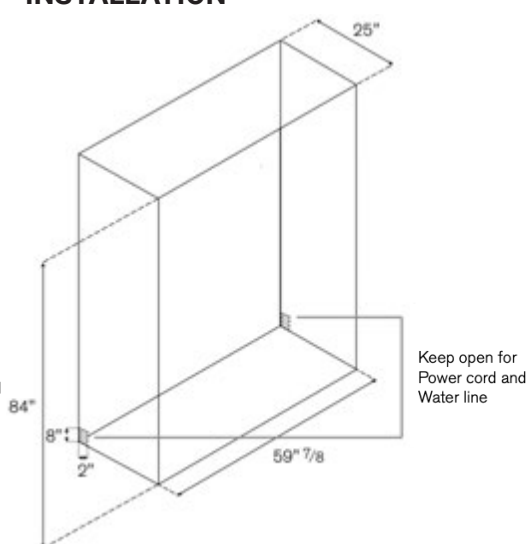
30" Built-In Bottom Freezer Refrigerator with Ice maker



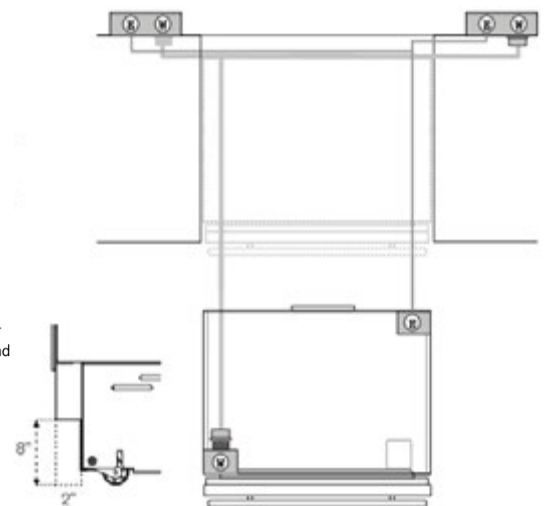
SINGLE INSTALLATION



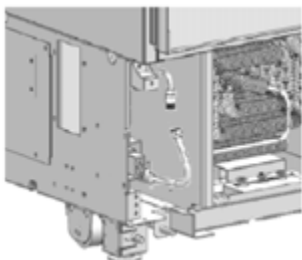
SIDE-BY-SIDE INSTALLATION



ELECTRICAL + WATER CONNECTION



INSTALLATION REQUIREMENTS

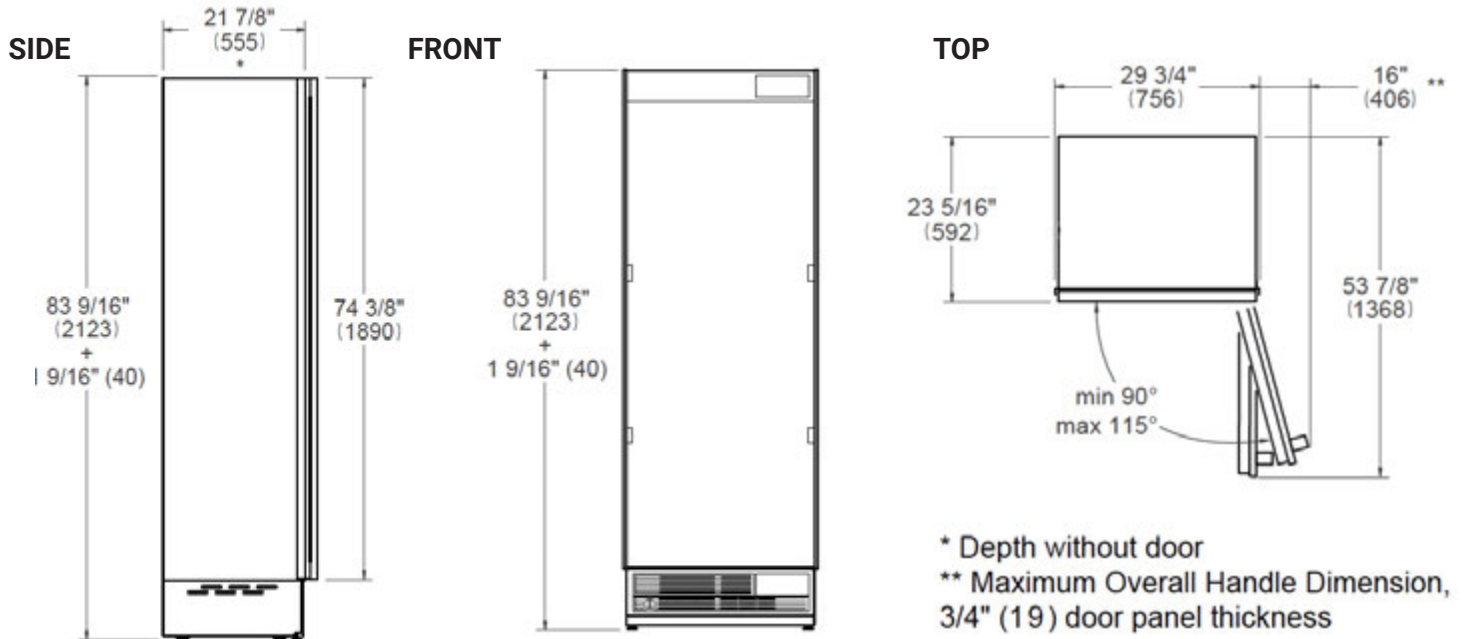


If the appliance(s) is not connected through the side profile trims to secured cabinetry, anti-tip brackets must be installed. The max weight for the cabinet panel is 35 lbs (16kg) for the refrigerator door and 20 lbs (9kg) for the freezer door. For a flush installation, cabinet panels should not be thicker than 15/16".

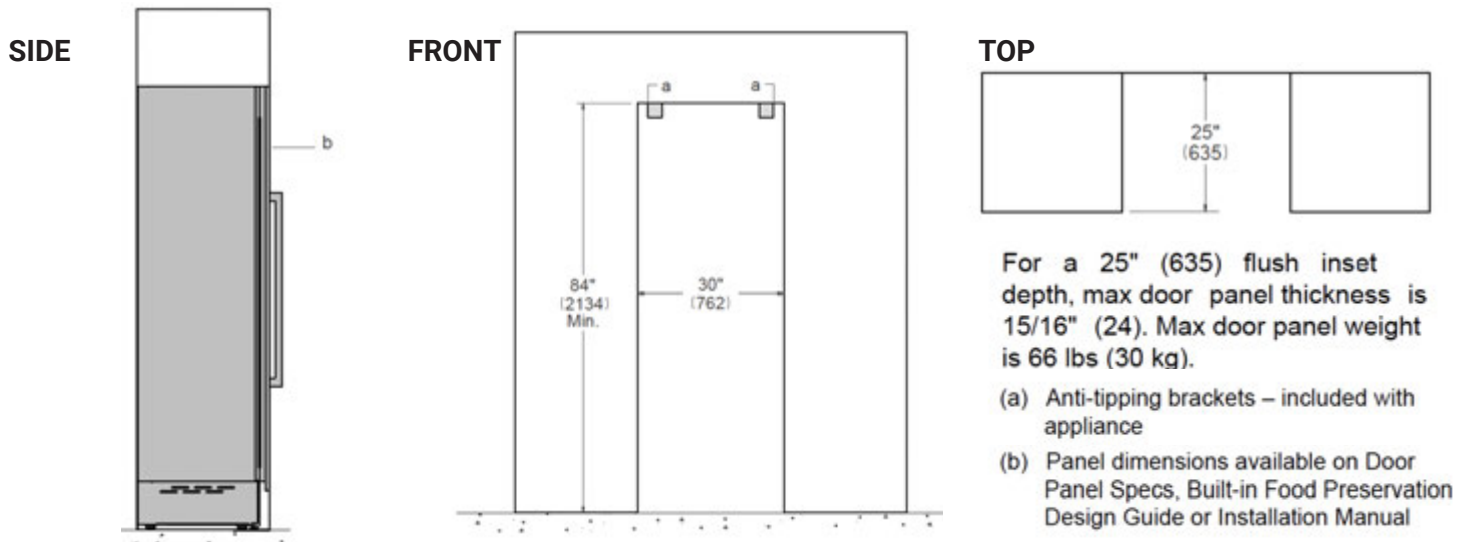
A properly-grounded, electrical receptacle should be installed. A separate circuit breaker servicing only this appliance is recommended. Do not use a multi-purpose socket with other electrical appliances. To connect to the water supply system, use a 1/4" waterline with accessible shut-off valve with a length of 60".

VBCR1661EWE

30" Built-In Refrigerator with Water Dispenser



CUTOUT DIMENSIONS



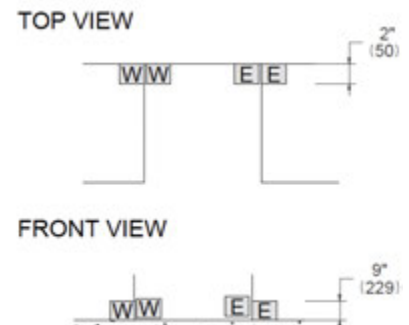
INSTALLATION REQUIREMENTS

If the appliance(s) is not connected through the side profile trims to secured cabinetry anti-tip brackets must be installed.

ELECTRICAL + WATER CONNECTION

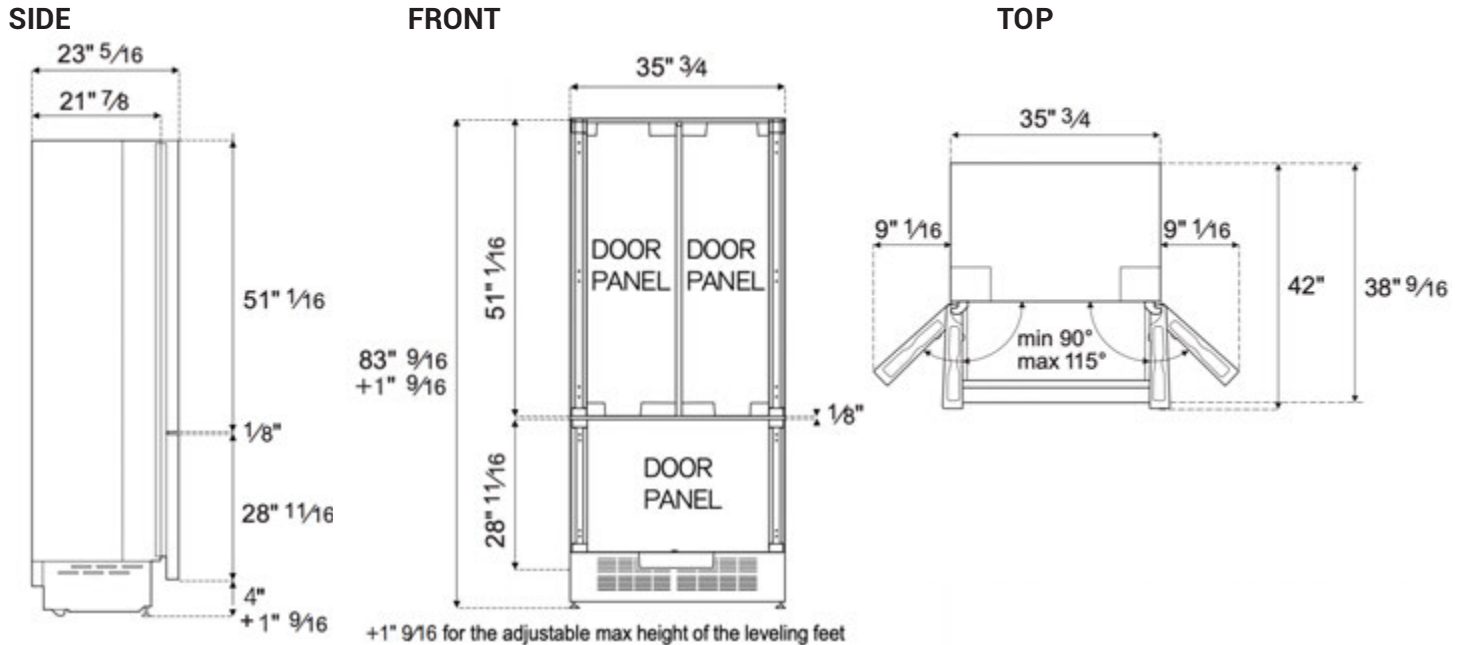
- E** A properly-grounded, horizontally-mounted electrical receptacle should be installed according to this drawing.
- W** To connect to the water supply system, use a 1/4" waterline with a minimum length of 60" (1500).

Connection(s) placement within the opening may require additional cabinet depth.

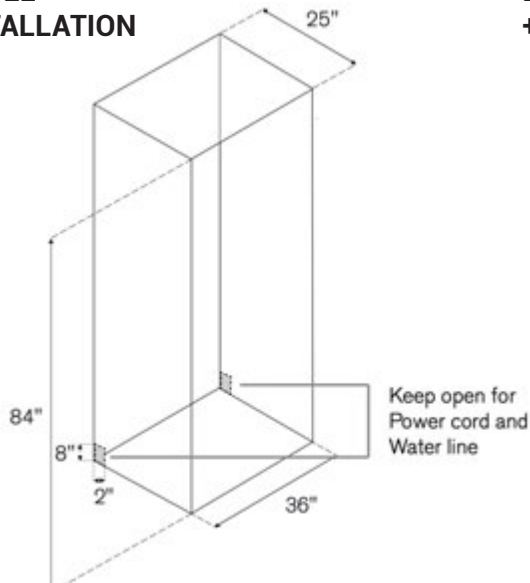


VBFBM1950EWEI

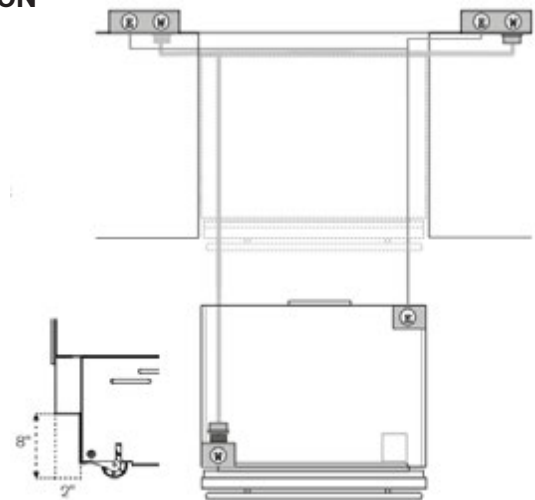
36" Built-In Bottom Freezer French Door Refrigerator with Ice maker



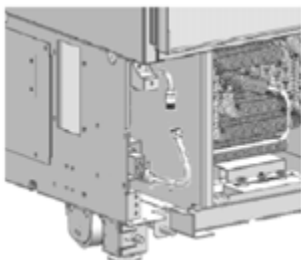
SINGLE INSTALLATION



ELECTRICAL + WATER CONNECTION



INSTALLATION REQUIREMENTS

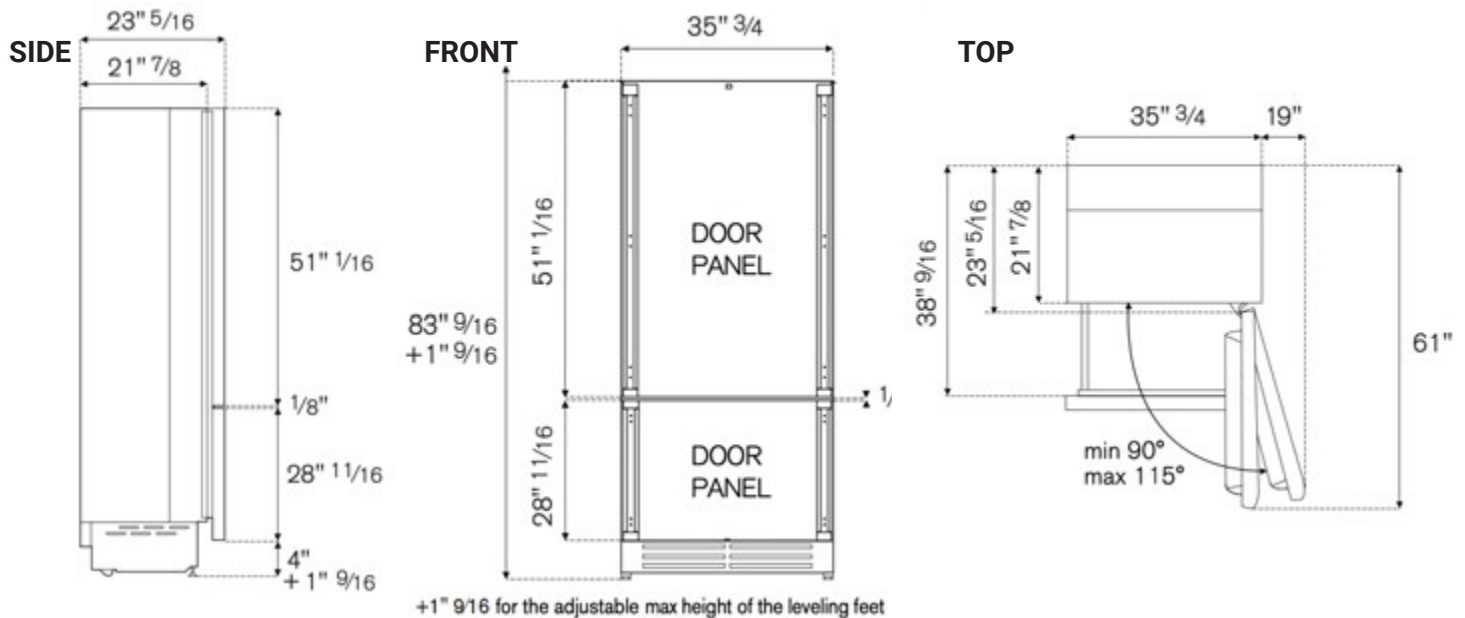


If the appliance(s) is not connected through the side profile trims to secured cabinetry, anti-tip brackets must be installed. The max weight for the cabinet panel is 35 lbs (16kg) for the refrigerator door and 20 lbs (9kg) for the freezer door. For a flush installation, cabinet panels should not be thicker than $15\frac{1}{16}$ ".

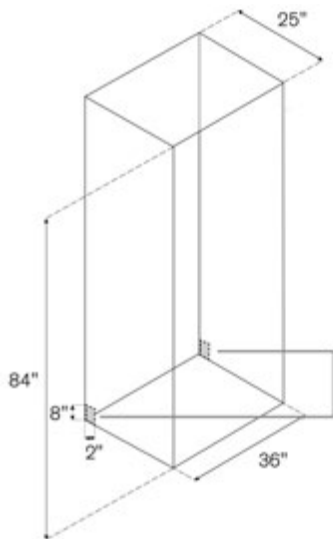
A properly-grounded, electrical receptacle should be installed. A separate circuit breaker servicing only this appliance is recommended. Do not use a multi-purpose socket with other electrical appliances. To connect to the water supply system, use a $\frac{1}{4}$ " waterline with accessible shut-off valve with a length of 60".

VBBM2000EWEI

36" Built-In Bottom Freezer Refrigerator with Ice maker

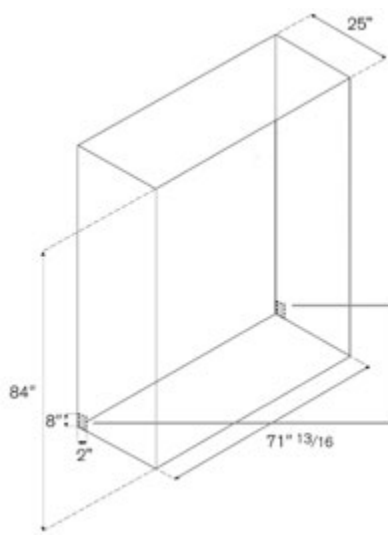


SINGLE INSTALLATION



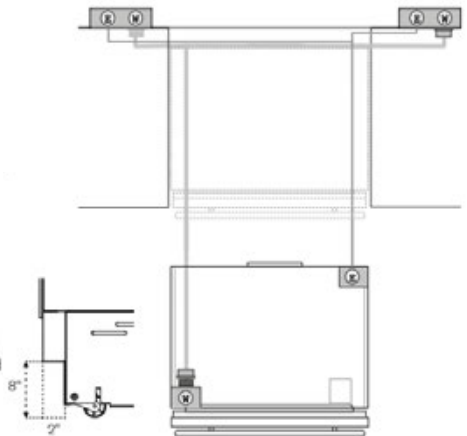
Keep open for
Power cord and
Water line

SIDE-BY-SIDE INSTALLATION

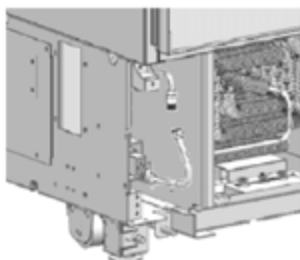


Keep open for
Power cord and
Water line

ELECTRICAL + WATER CONNECTION



INSTALLATION REQUIREMENTS



If the appliance(s) is not connected through the side profile trims to secured cabinetry, anti-tip brackets must be installed. The max weight for the cabinet panel is 35 lbs (16kg) for the refrigerator door and 20 lbs (9kg) for the freezer door. For a flush installation, cabinet panels should not be thicker than $15\frac{1}{16}$ ".

A properly-grounded, electrical receptacle should be installed. A separate circuit breaker servicing only this appliance is recommended. Do not use a multi-purpose socket with other electrical appliances. To connect to the water supply system, use a $\frac{1}{4}$ " waterline with accessible shut-off valve with a length of 60".